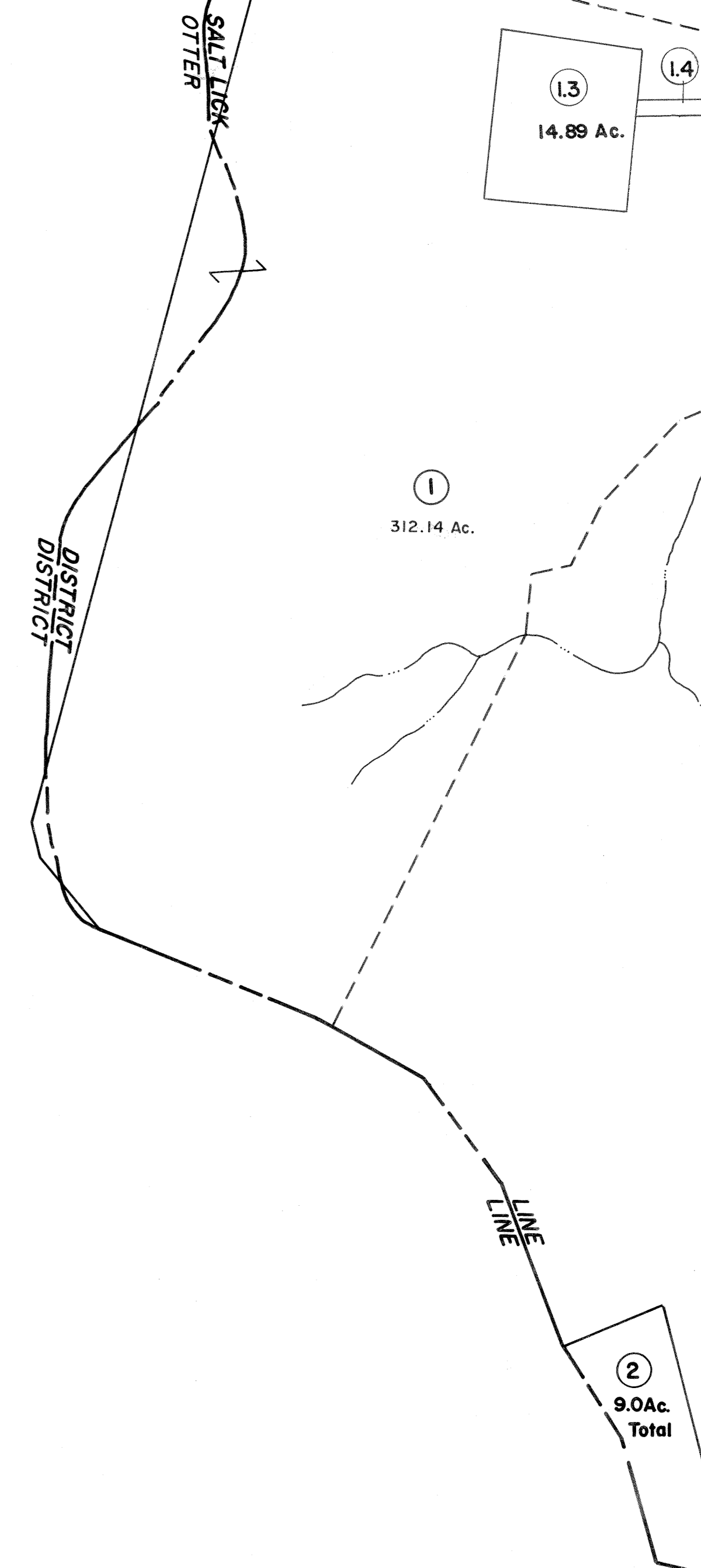
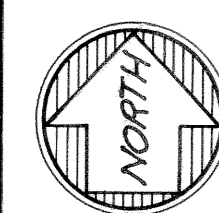


9H 10H
9J 10J

P6 10-H-8



9-J 10-J
10-K



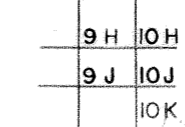
For Tax Purposes Only

Prepared by
VOGT, IVERS AND ASSOCIATES
 ENGINEERS-ARCHITECTS
 CHARLESTON, W.VA.
 CINCINNATI, OHIO

Property line	—————	Original lot line	- - - - -
Edge of pavement or roadway	—————	Deed lot number	(15)
Corporation line	—————	Parcel or index number	⊙
District line	—————	Improvement	o
County line	—————	Railroad	+

Revisions			
1	PARCELS 1-1, 1-2 ADDED 6-28-63	9	17
2	5-24-77	SRJ	18
3	NOVEMBER, 1981	TRL	19
4	JULY 1, 1983	CBG	20
5	7-1-84	L.E.S.	21
6	ESI 6/6/02	REK	22
7	4/22/08	S.B.H.	23
8			24

KEY MAP



BRAXTON COUNTY

STATE OF WEST VIRGINIA

Office of Assessor

DISTRICT

SALT LICK DISTRICT

SHEET NO: 9-J

Date, Aerial Photography: 4-22-60
 Photo No: BR-14-118

Date, Map: 4-24-62
 Scale: 1" = 400'