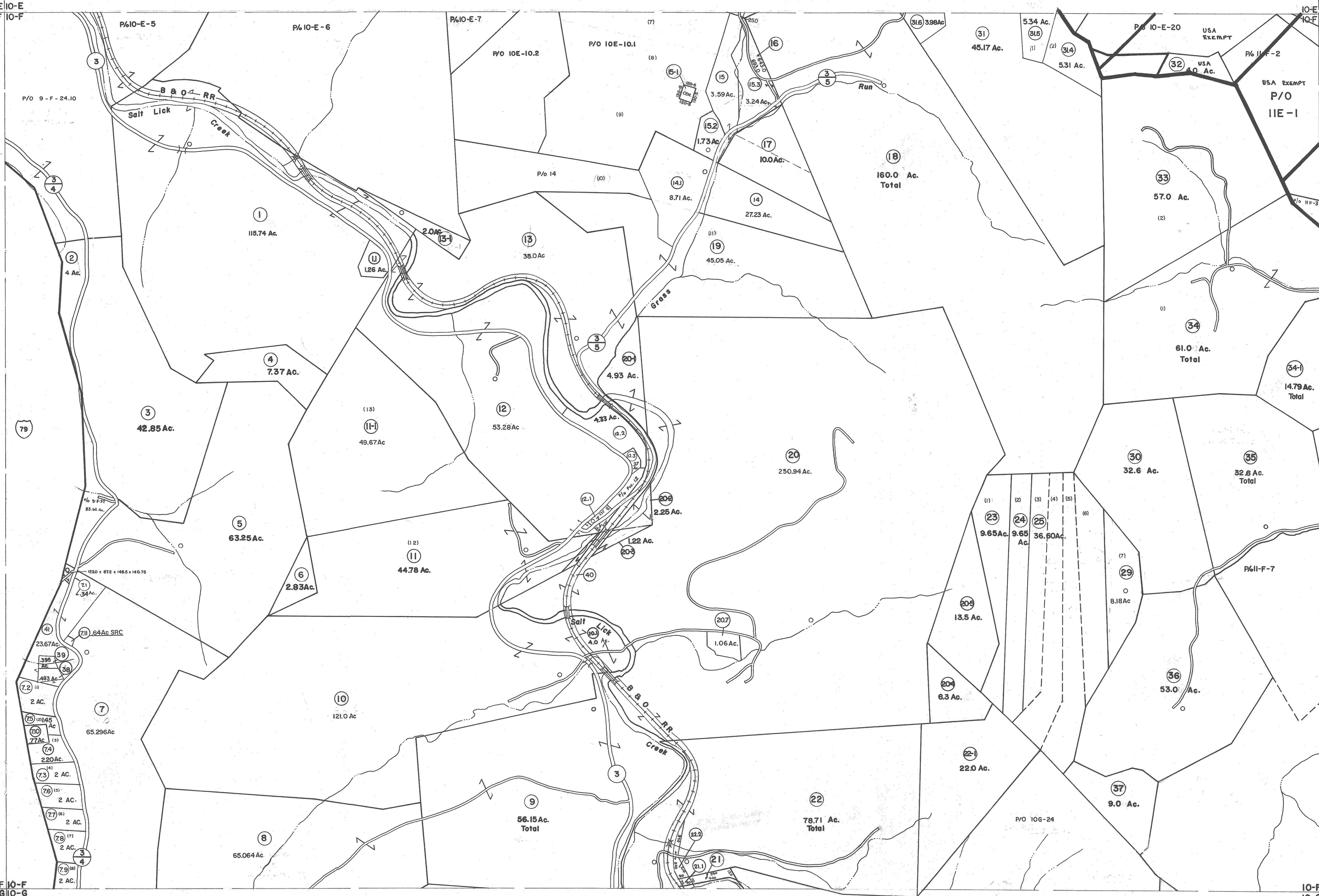


9-E10-E  
9-F10-F

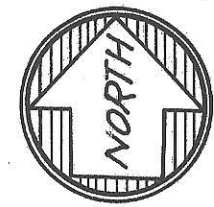
10-E11-E  
10-F11-F



9-F10-F  
9-G10-G

10-F11-F  
10-G11-G

For Tax Purposes Only



Prepared by  
**VOGT, IVERS AND ASSOCIATES**  
ENGINEERS-ARCHITECTS  
CHARLESTON, W.VA.  
CINCINNATI, OHIO

Property line ————  
 Edge of pavement or roadway ————  
 Corporation line ————  
 District line ————  
 County line ————

Original lot line ————  
 Deed lot number (15) ————  
 Parcel or index number (99) ————  
 Improvement ————  
 Railroad ————

Revisions		Date	By
1	PARCELS 7-1,11-1,13-1,15-1,20-1	9/15/07	S&H
2	20-2,20-3,20-4,20-5,22-1,34-1	3-18-10	H&S
3	37-1 ADDED 6-25-63	4-7-11	H&S
4	PARCEL 15-1 ADDED 10-3-63	4-2-14	H&S
5	8-31-77 VM	2/19/15	S&H
6	NOVEMBER, 1981 TRL		
7	Revised to 7-1-83		
8	7-1-84 L.E.S.		
9	Revised to 7-1-85		
10	July, 1987 TRL		
11	Revised to 1-1-88		
12	EXCALIBUR GRAPHICS 5/93		
13	O.G.I.S 6-1-96		
14	ESI 4-27-00 REK		
15	5/5/04 S&H		
16	5/10/05 S&H		
17	4/15/07 S&H		
18	3-18-10 H&S		
19	4-7-11 H&S		
20	4-2-14 H&S		
21	2/19/15 S&H		
22			
23			
24			

KEY MAP

9-E10-E11-E  
9-F10-F11-F  
9-G10-G11-G

# BRAXTON COUNTY

STATE OF WEST VIRGINIA

Office of Assessor

DISTRICT

SALT LICK DISTRICT

SHEET NO: 10-F

Date, Aerial Photography: 4-20-60  
Photo No: BR-14-102

Date, Map: 4-5-62  
Scale: 1" = 400'