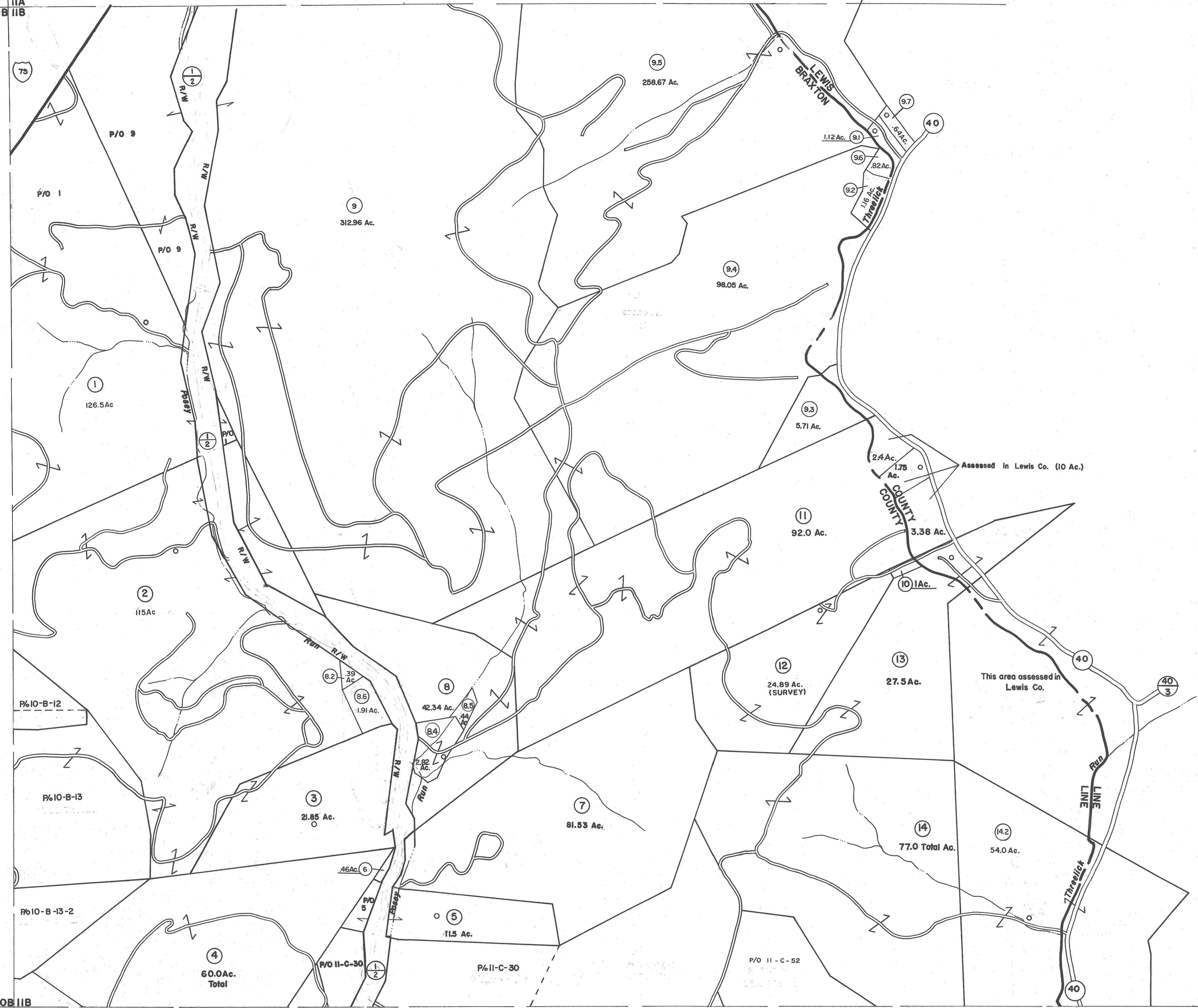


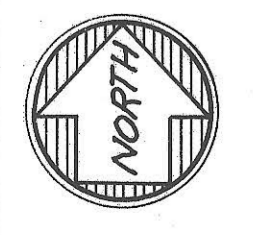
11A  
10B  
11B

11-A  
11-B



10B  
10C  
11C

11-B  
11-C

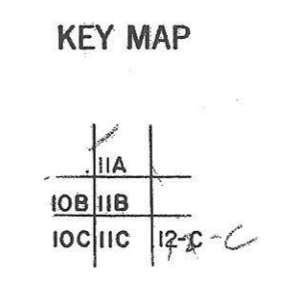


For Tax Purpose: Only

Prepared by  
**VOGT, IVERS AND ASSOCIATES**  
 ENGINEERS-ARCHITECTS  
 CHARLESTON, W.VA.  
 CINCINNATI, OHIO

Property line	---	Original lot line	---
Edge of pavement or roadway	---	Deed lot number	(15)
Corporation line	---	Parcel or index number	(20)
District line	---	Improvement	---
County line	---	Railroad	---

Revisions			
1	PARCELS 8-1-14-1 ADDED 8-25-63	9	4-15-98 J.E.B
2	6-2-77 VEA	10	ESI 5/24/01 REK
3	NOVEMBER, 1981 TR	11	ESI 6/6/02 REK
4	divided 1, 1983	12	5/3/03 S.B.H
5	7-1-84 L.E.S.	13	5/9/05 S.B.H
6	Revised to 1-1-88	14	4/15/07 S.B.H
7	O.G.I.S 6-1-96 J.E.B	15	4/12/09 S.B.H
8	5-1-97 J.E.B	16	4-2-14 H.S.



**BRAXTON COUNTY**

STATE OF WEST VIRGINIA

Office of Assessor

DISTRICT	SALT LICK DISTRICT
SHEET NO:	11-B
Date, Aerial Photography:	4-20-60
Photo No:	BR-14-71
Date, Map:	4-20-62
Scale:	1" = 400'