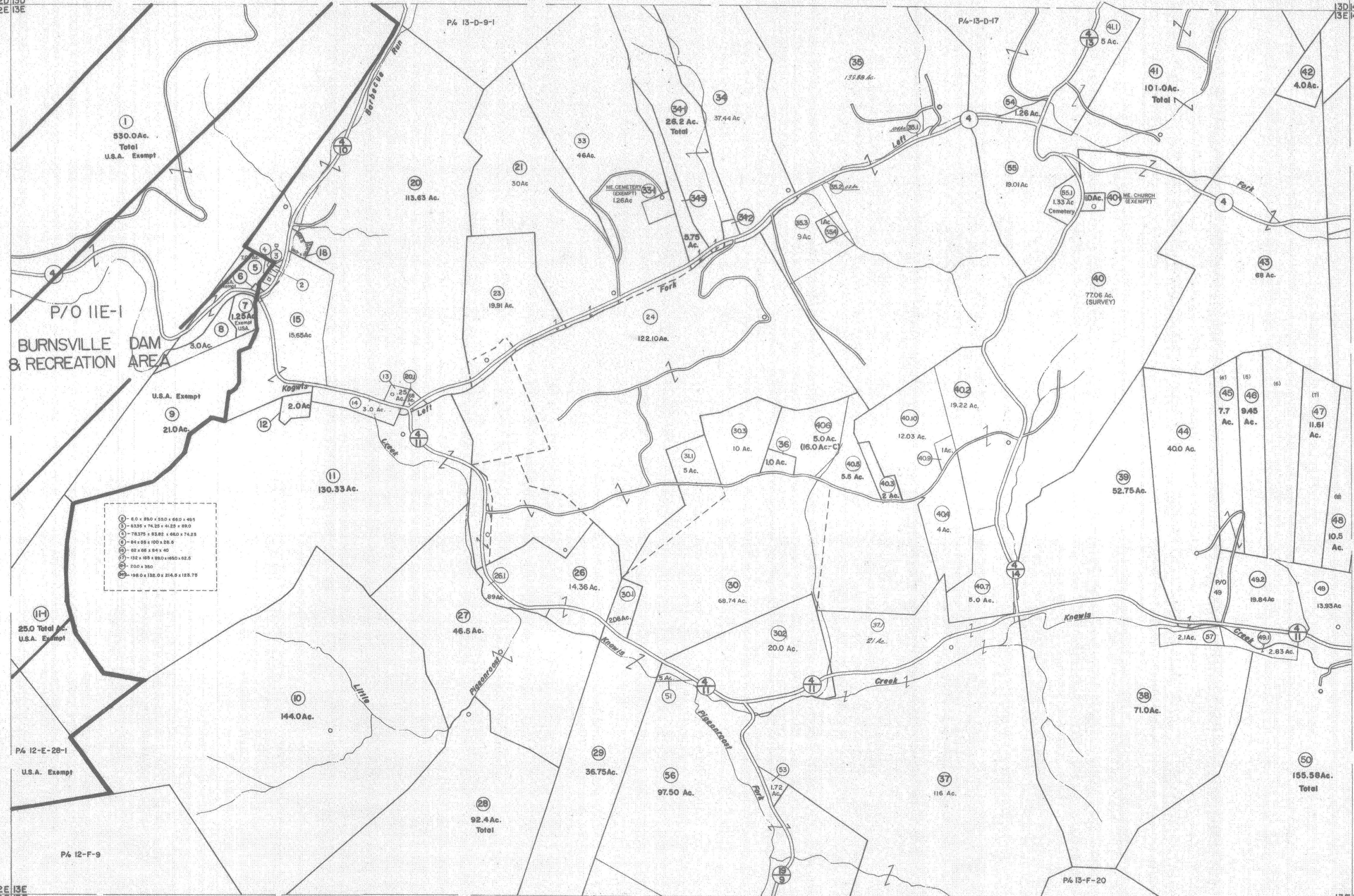


12D 13D
12E 13E

13D 14D
13E 14E



- ① - 6.0 x 85.0 x 55.0 x 66.0 x 49.5
- ② - 63.95 x 74.25 x 41.25 x 89.0
- ③ - 78.375 x 83.82 x 66.0 x 74.25
- ④ - 84 x 66 x 100 x 28.0
- ⑤ - 82 x 66 x 84 x 40
- ⑥ - 132 x 189 x 88.0 x 165.0 x 62.5
- ⑦ - 200 x 350
- ⑧ - 198.0 x 132.0 x 214.9 x 125.75

12E 13E
12F 13F

13E 14E
13F 14F

For Tax Purposes Only

Prepared by
VOGT, IVERS AND ASSOCIATES
ENGINEERS-ARCHITECTS
CHARLESTON, W.VA.
CINCINNATI, OHIO

Property line ————
Edge of pavement or roadway ————
Corporation line ————
District line ————
County line ————

Original lot line ————
Deed lot number (15) ————
Parcel or index number (20) ————
Improvement ————
Railroad ————

Revisions			
1	PARCELS 19-1, 25-1, 33-1, 34-1	9	7-1-84 L.E.S.
2	34-2, 34-3, 40-1, 40-2, 40-3	10	July 1987 T.R.L.
3	40-4, 40-5, 40-6, ADDED	11	5/11/03 S.B.H.
4	6-27-63	12	OGIS 5/8/96 SAJ
5	PARCEL 11-1 ADDED 6-28-63	13	5-1-97 J.E.B.
6	6/23/77	14	4-15-98 J.E.B.
7	November 1981	15	5-1-99 J.E.B.
8	4-27-00	16	4-27-00 BEV
9	5/24/01	17	ESL
10	6/11/02	18	ESL
11	5/6/04	19	S.B.H.
12	5/7/05	20	S.B.H.
13	5/7/05	21	S.B.H.
14	4/22/06	22	S.B.H.
15	4/12/09	23	S.B.H.

6/9/12
4/11/13
4/2-17
2/21-16
2/14/17

KEY MAP

12D 13D 14D
12E 13E 14E
12F 13F 14F

S.B.H.
S.B.H.
H-4-S
H-4-S
S.L.S.

BRAXTON COUNTY
STATE OF WEST VIRGINIA
Office of Assessor

DISTRICT
SALT LICK DISTRICT

SHEET NO: 13-E

Date, Aerial Photography: 4-22-60 Date, Map: 4-25-62