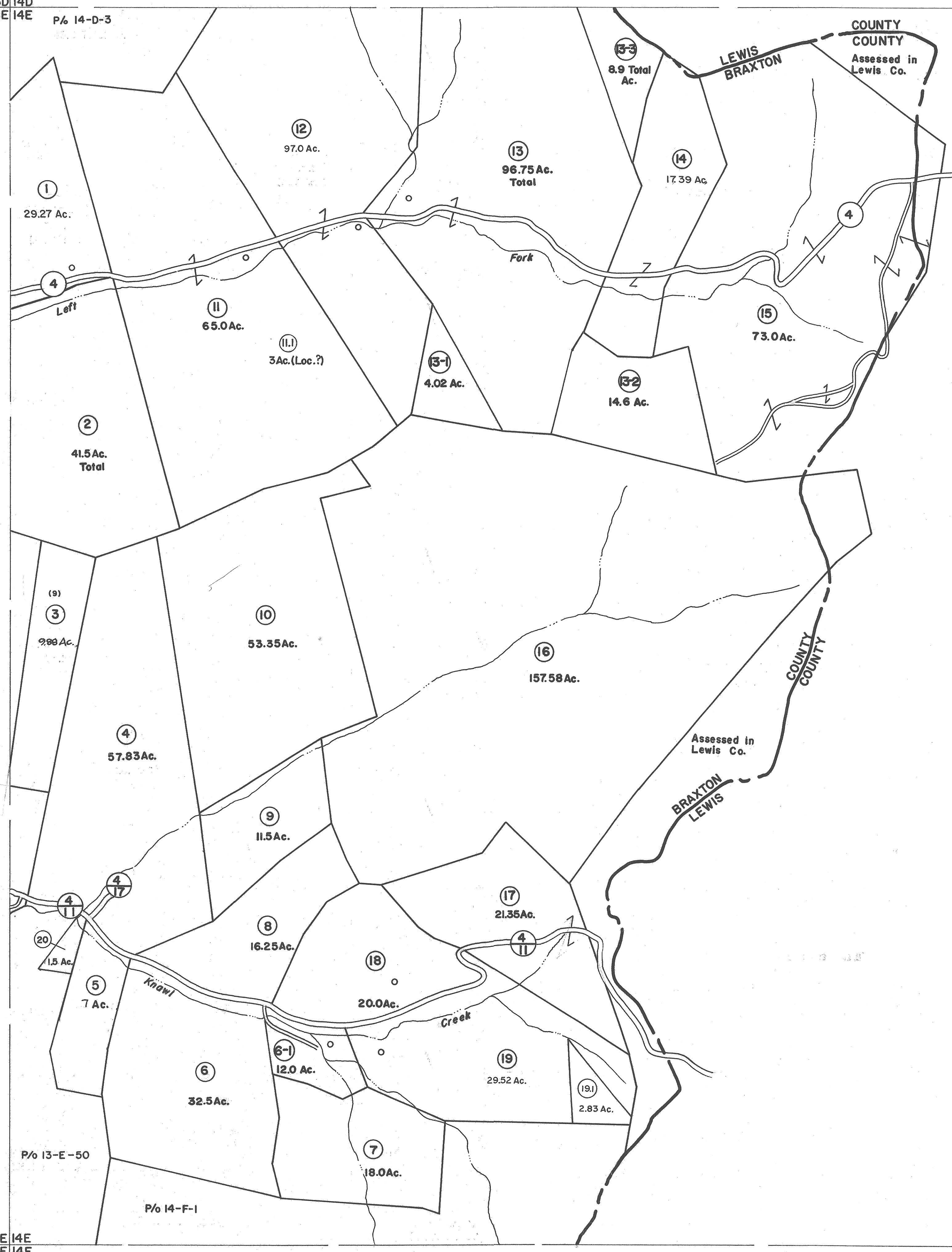


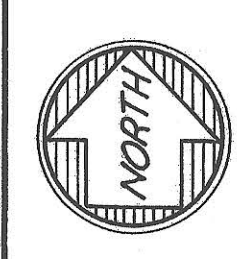
13D 14D
13E 14E P/o 14-D-3



P/o 13-E-50

P/o 14-F-1

13E 14E
13F 14F



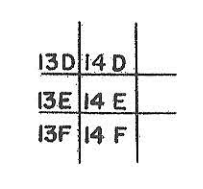
For Tax Purposes Only

Prepared by
VOGT, IVERS AND ASSOCIATES
ENGINEERS-ARCHITECTS
CHARLESTON, W.VA.
CINCINNATI, OHIO

Property line	—————	Original lot line	-----
Edge of pavement or roadway	-----	Deed lot number	(15)
Corporation line	-----	Parcel or index number	(11)
District line	-----	Improvement	o
County line	-----	Railroad	—+—+—+—

Revisions			
1	PARCELS 6-1, 13-1, 13-2, 13-3	9	OGIS 2/11/91 DSH
2	ADDED 6-28-63	10	5-1-99 J.E.B.
3	5-24-77	11	ESI 6/11/02 REK
4	November, 1981	12	4/2/13 S.B.H.
5	July 14, 1983	13	2/21/15 S.B.H.
6	7-1-84	14	
7	July, 1987	15	
8		16	

KEY MAP



BRAXTON COUNTY

STATE OF WEST VIRGINIA
Office of Assessor

DISTRICT
SALT LICK DISTRICT

SHEET NO: 14-E

Date, Aerial Photography: 4-22-60 Date, Map: 4-19-62
Photo No: BR-14-13.14 Scale: 1" = 400'