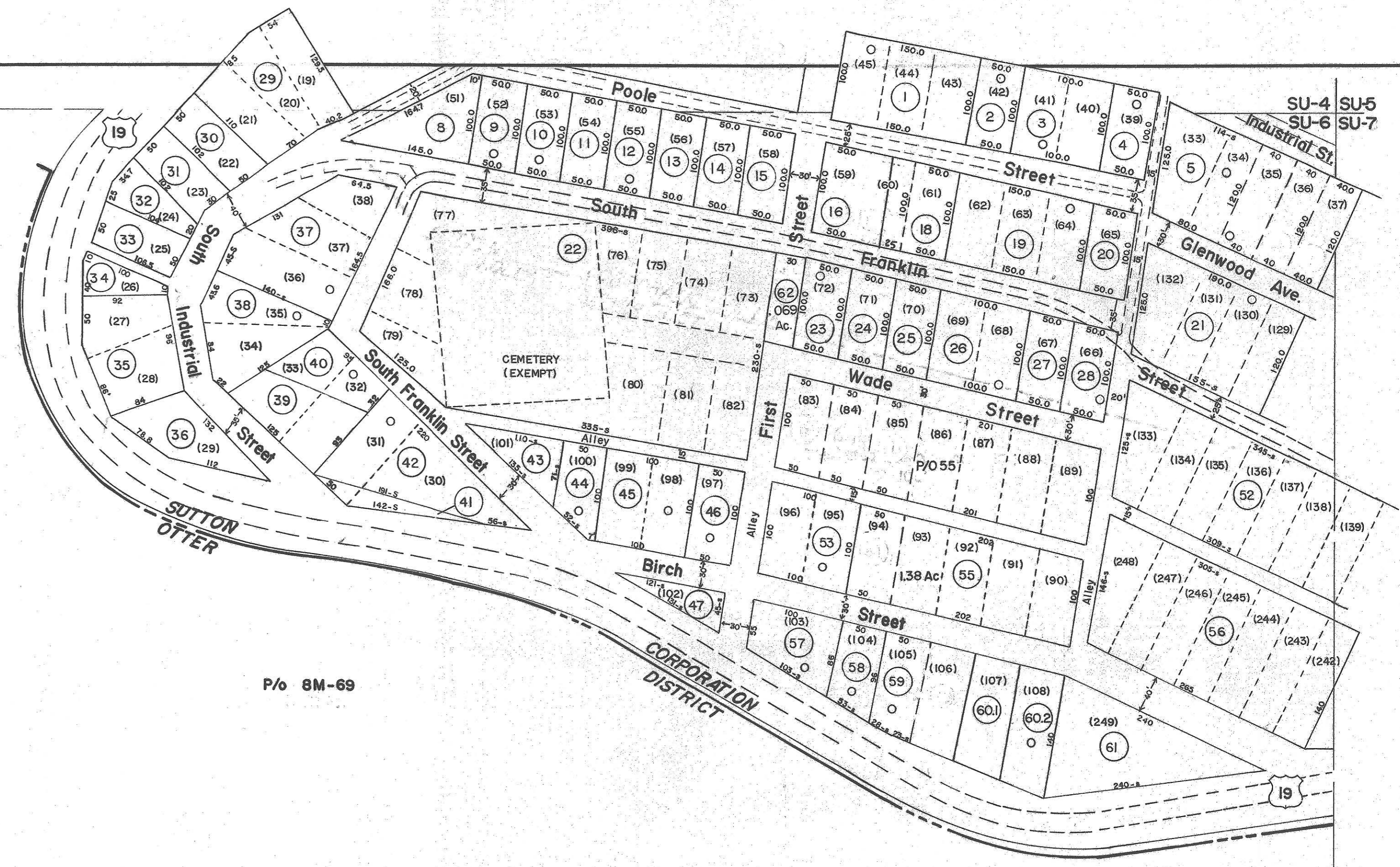


SU-4
SU-6

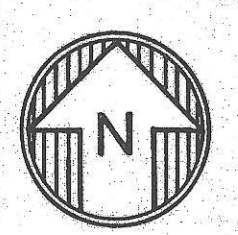
SU-4
SU-6
SU-7



P/O 8M-69

P/O 8M-71

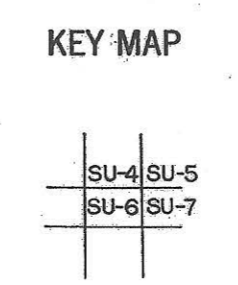
SU-6 SU-7



For Tax Purposes Only
Prepared by
VOGT, IVERS AND ASSOCIATES
ENGINEERS-ARCHITECTS
CHARLESTON, W.VA.
CINCINNATI, OHIO

Property line	-----	Original lot line	-----
Edge of pavement or roadway	-----	Deed lot number	(15)
Corporation line	-----	Parcel or index number	(20)
District line	-----	Improvement	o
County line	-----	Railroad	o

Revisions	
1 Revised to 7-1-84	9 ESI 6/6/02 REK 17
2 REV. 7-80 DR. 8-82 T. Groves	10 4/15/07 SBH 18
3 " 7-1-83	11 3-18-10 HHS 19
4 7-1-84 L.E.S.	12 2/20/15 SBH 20
5 Revised to 7-1-84	13 21
6 EXCALIBUR GRAPHICS 5/93	14 22
7 OGIS 5/1/95 SAJ	15 23
8 5-1-97 J.E.B.	16 24



BRAXTON COUNTY
STATE OF WEST VIRGINIA
Office of Assessor

DISTRICT **TOWN OF SUTTON**
SHEET NO: **SU-6**
Date, Aerial Photography: 4-14-60 Date, Map: 2-28-63
Photo No: BRS-12-38 Scale: 1"=100'