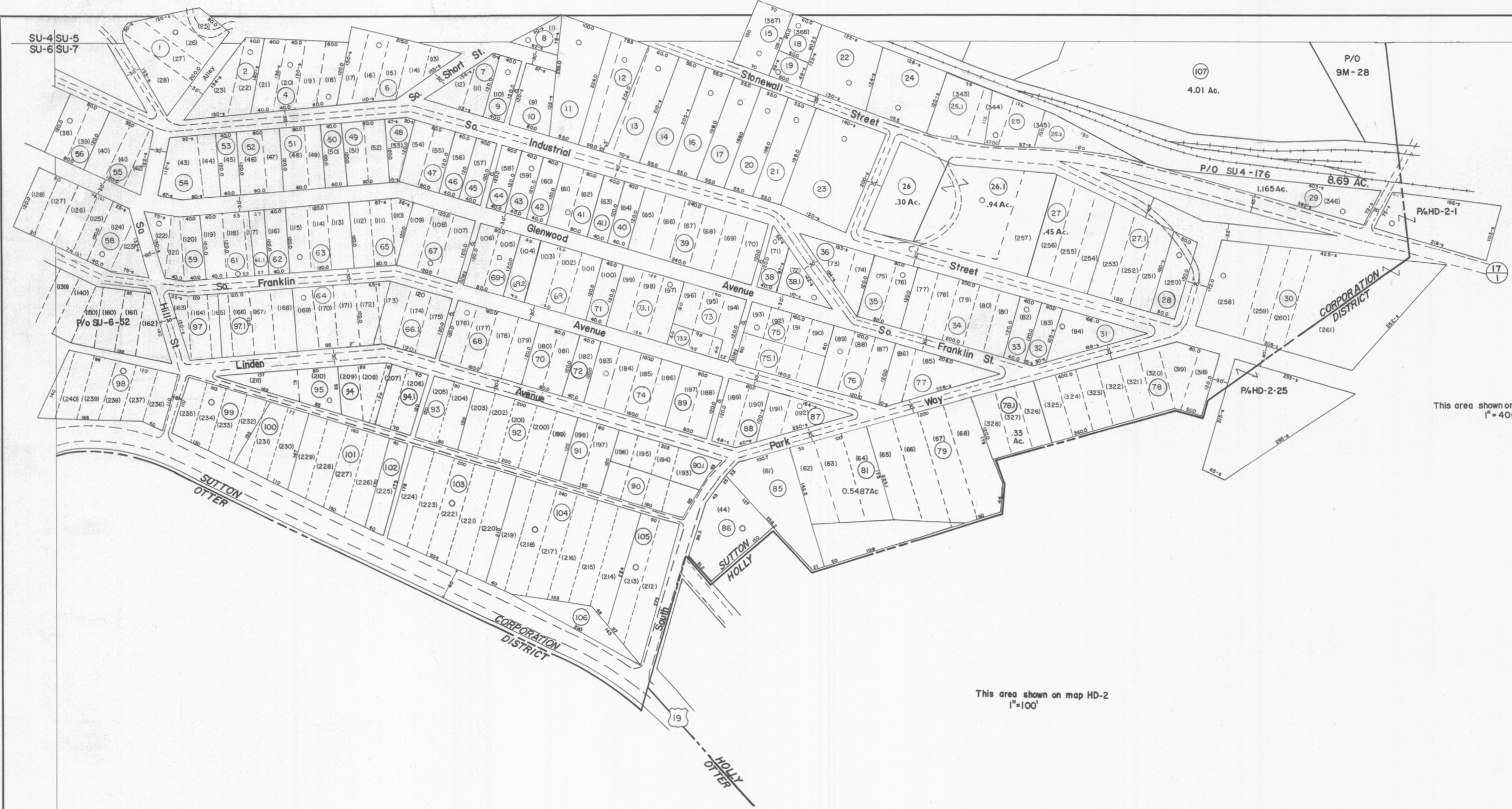


SU-4
SU-5
SU-6
SU-7

SU-5
SU-7



This area shown on map 9-M
1" = 400'

This area shown on map HD-2
1" = 100'

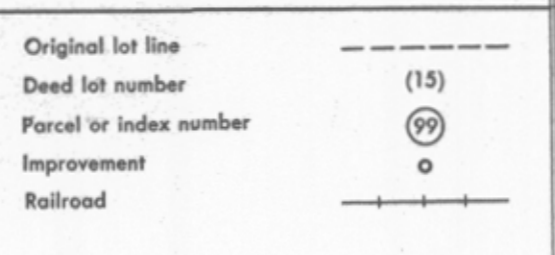
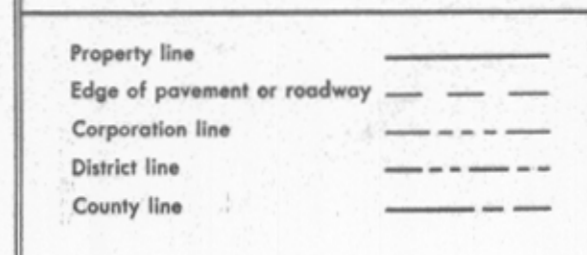
SU-6
SU-7

SU-7

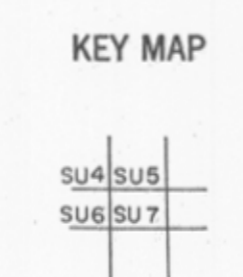


For Tax Purposes Only

Prepared by
VOGT, IVERS AND ASSOCIATES
ENGINEERS-ARCHITECTS
CHARLESTON, W.VA.
CINCINNATI, OHIO



Revisions	
1	3-4-76 T.E.
2	Revised to 7-1-80 J.E.
3	REV. 7-80 DR. 8-82 T. Groves ESI
4	" 7-1-83 C.B.G.
5	7-1-84 L.E.S.
6	Revised to 7-1-85 J.E.
7	Revised to 7-1-86 J.E.
8	OGIS 1/27/91 DSH
9	0.6.1.S 6-1-96 J.E.E
10	S-1-97 J.E.B
11	6/6/02 REK
12	5/3/03 S.B.H
13	5/11/05 S.B.H
14	4/9/06 S.B.H
15	4/15/07 S.B.H
16	3-18-10 J.E.E
17	4-7-11 J.E.E
18	4-2-14 J.E.E
19	2/21/15 S.B.H
20	2/1/18 NLS
21	
22	
23	
24	



BRAXTON COUNTY

STATE OF WEST VIRGINIA

Office of Assessor

DISTRICT	TOWN OF SUTTON
SHEET NO:	SU-7
Date, Aerial Photography: 4-14-60	Date, Map: 2-26-63
Photo No: BRS-12-38	Scale: 1" = 100'