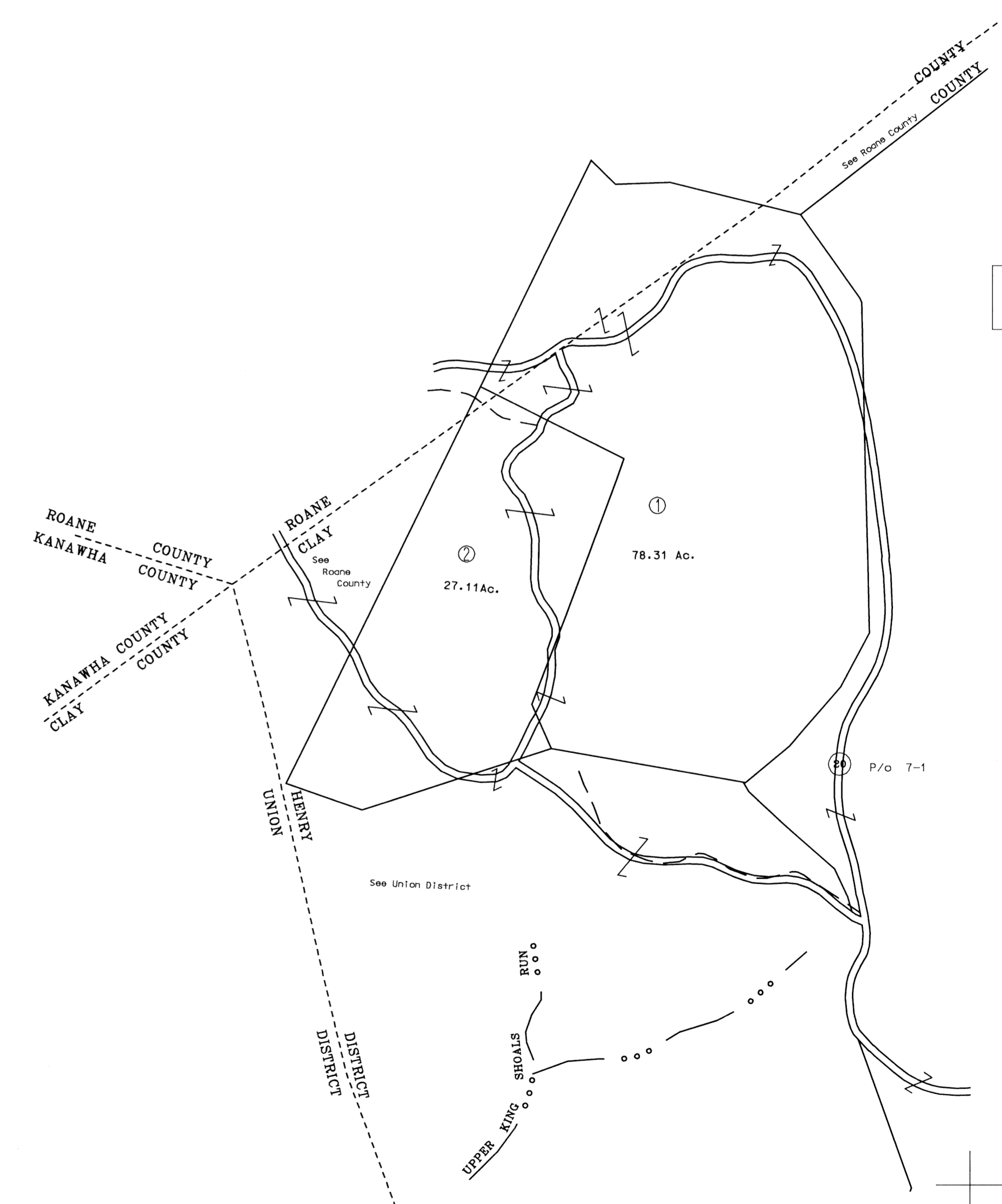


7



11

For Tax Purposes Only  
 Prepared by  
 McKenzie Engineering Corporation  
 806 Broad Street  
 Summersville, WV 26651

LEGEND	
Property line	—————
Edge of pavement or roadway	- - - - -
Corporation line	- - - - -
District line	- - - - -
County line	- - - - -
Original lot line	- - - - -
Deed lot number	(15)
Parcel or index number	Ⓢ
Improvement	o
Railroad	—+—+—+—

REVISIONS
1
2
3
4
5
6
7
8

RESTRICTION

All tax maps created under the provisions of reappraisal legislation are the property of Clay County West Virginia and the reproduction, copying, distribution or sale of such tax maps or any copies thereof without the written permission of the Clay County Assessor is prohibited by law.

KEY MAP
3
6 7
11 12

CLAY COUNTY  
 STATE OF WEST VIRGINIA  
 Office of Assessor

HENRY DISTRICT  
 SHEET NO: 6  
 Date, Aerial Photography: 4-6-63 Date, Map: 7-30-65  
 Photo No: 13-1907&1908 14-1865&1866 Scale: 1" = 400'  
 13-1908&1909 14-1866&1867