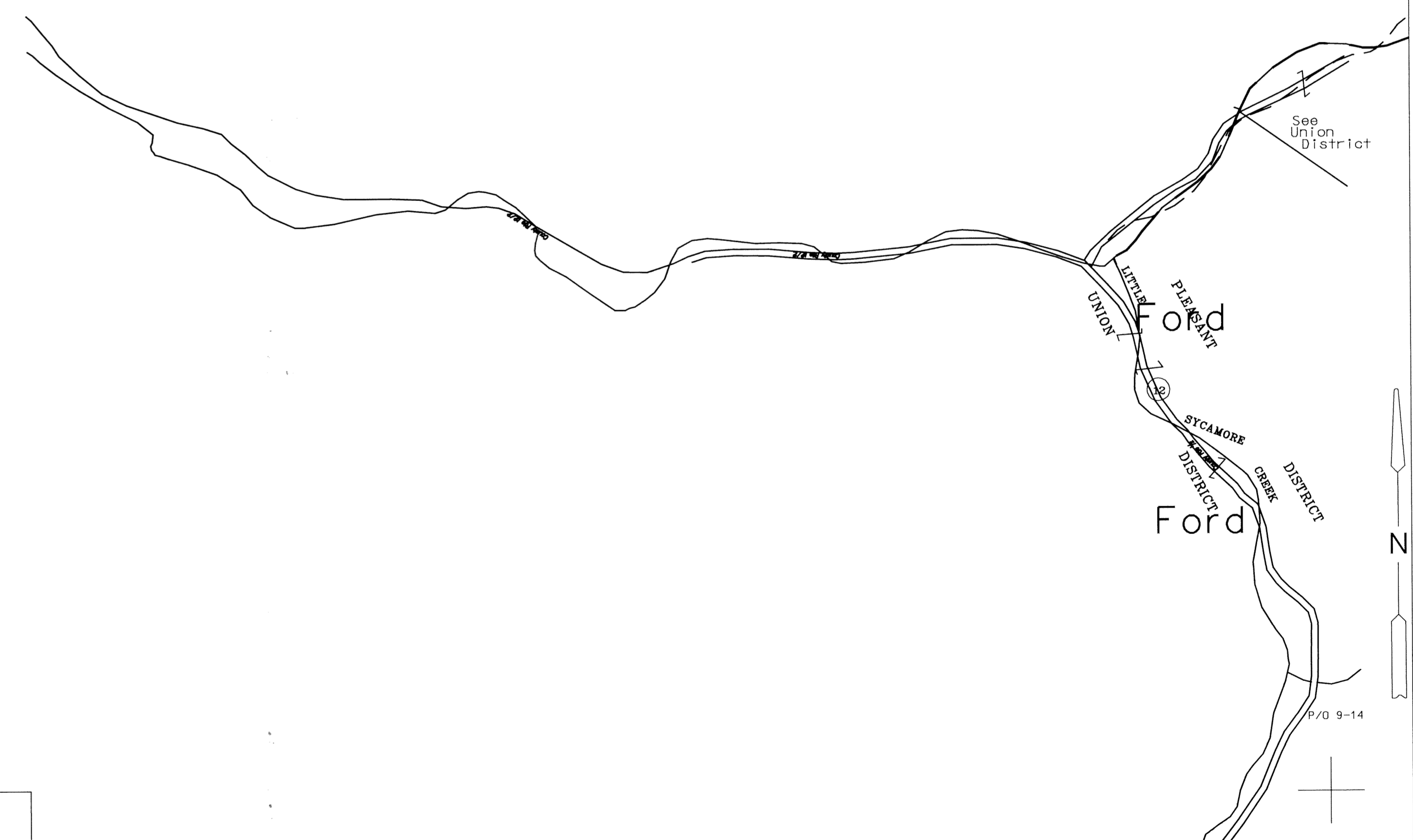


PLEASANT DISTRICT
 LITTLE SYCAMORE CREEK
 UNION DISTRICT



P/O 9-14

F:\WP\CLAY\DATA\APPH\DISTRICTS\APR 11, 2001 12:37:37

For Tax Purposes Only
 Prepared by
 McKenzie Engineering Corporation
 806 Broad Street
 Summersville, WV 26651

| LEGEND | |
|-----------------------------|------------------------|
| Property line | Original lot line |
| Edge of pavement or roadway | Deed lot number |
| Corporation line | Parcel or index number |
| District line | Improvement |
| County line | Railroad |

| REVISIONS |
|-----------|
| 1 |
| 2 |
| 3 |
| 4 |
| 5 |
| 6 |
| 7 |
| 8 |

RESTRICTION

All tax maps created under the provisions of reappraisal legislation are the property of Clay County West Virginia and the reproduction, copying, distribution or sale of such tax maps or any copies thereof without the written permission of the Clay County Assessor is prohibited by law.

| KEY MAP | |
|---------|----|
| 4 | 5 |
| 8 | 9 |
| 11 | 13 |

CLAY COUNTY
 STATE OF WEST VIRGINIA
 Office of Assessor

DISTRICT
 PLEASANT
 SHEET NO: 8
 Date, Aerial Photography: Photo No:
 Date, Map: Scale: 1" = 400'