

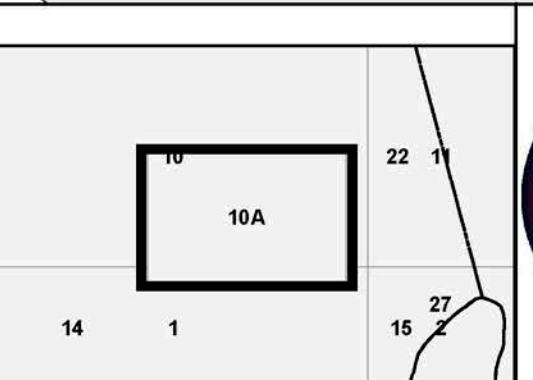
FOR TAX PURPOSES ONLY
LANDMARK
 geospatial
A Division of Landmark Forestry LLC

Legend	
	District Boundary
	Previous Deed
	Property
	Road Easement
	Railroad Right of Way
	Road Right of Way
	River
	Jeep Trail
	Dead lot Number (15)
	Parcel or Index Number
	Unknown
	Improvement
	Cemetery
	Church
	Educational

Restriction

All tax maps created under the provisions of reappraisal legislation are the property of the Assessor of Clay County, West Virginia and the reproduction, copying, modification, distribution or sale of such tax maps or any copies thereof without the written permission of the Clay County Assessor is prohibited by law.

Revisions					
1	LANDMARK	01/2014	10	19	28
2			11	20	29
3			12	21	30
4			13	22	31
5			14	23	32
6			15	24	33
7			16	25	34
8			17	26	35
9			18	27	36



CLAY COUNTY
 Assessor's Office
 Teresa Lane, Assessor
 CLAY, WV

UNION
 District 06 Map No. 10A
 Date of Publication: 2/5/2014
 Scale: 1"=200'