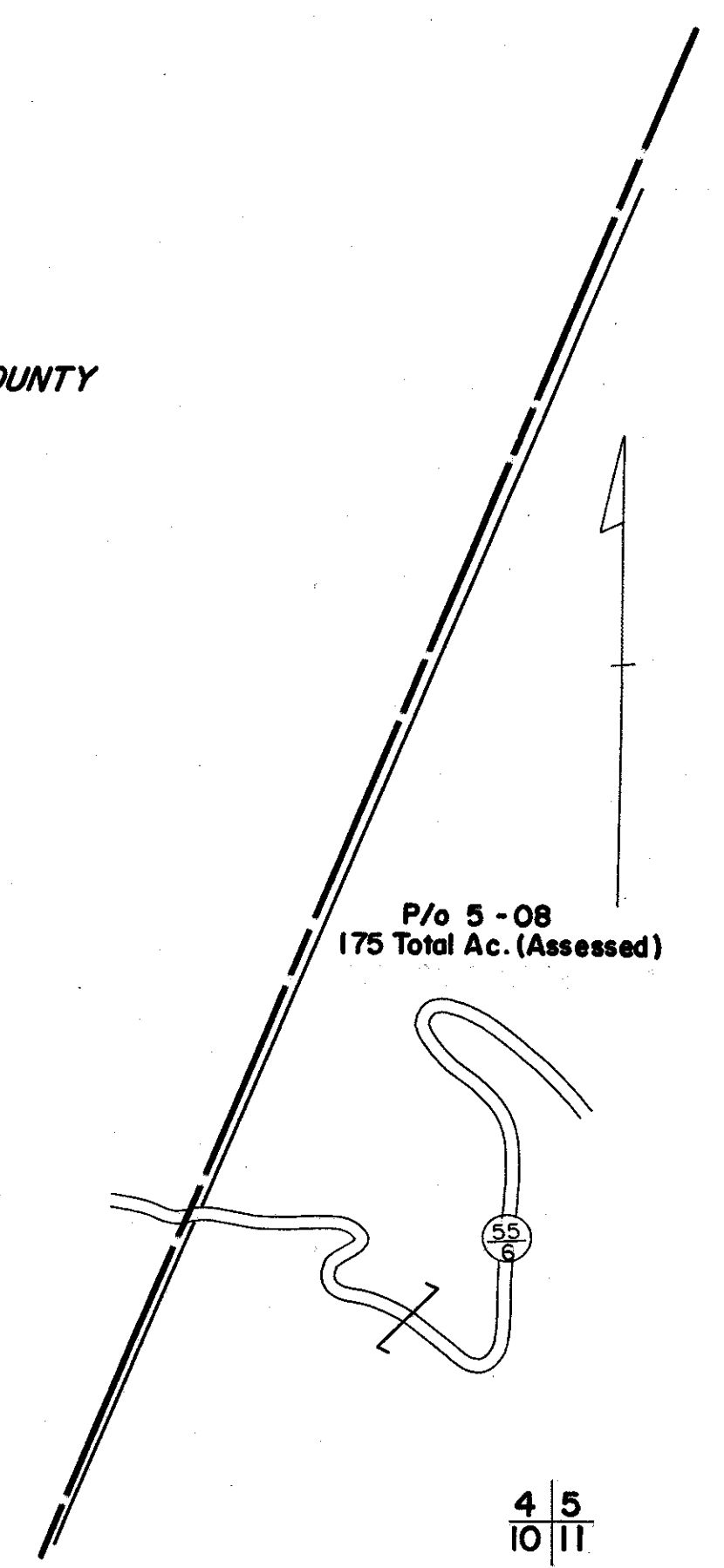


TYLER COUNTY



FOR TAX PURPOSES ONLY

Prepared by
L. ROBERT KIMBALL
Consulting Engineer
 Ebensburg, Pennsylvania

156 IMPERIAL, A. S. SMITH CO., PHIL., PA., 91244-1782

Legend	
Property line	Original lot line
Edge of pavement or roadway	Dead lot number in parenthesis (15)
Corporation line	Parcel or index number in circle (20)
District line	Improvement
County line	Railroad

Revisions	
1	REVISED 7-81 T. Groves
2	Rev. to 7-1-89 R.E.B.
3	
4	
5	
6	
7	
8	

STATE OF WEST VIRGINIA
 DODDRIDGE COUNTY
 Office of Assessor

McCLELLAN DISTRICT
 SHEET 04

Date, Aerial Photography: APRIL, 1962 Date, Map: SEPT., 1963
 Photo No: 230 Scale: 1" = 400'