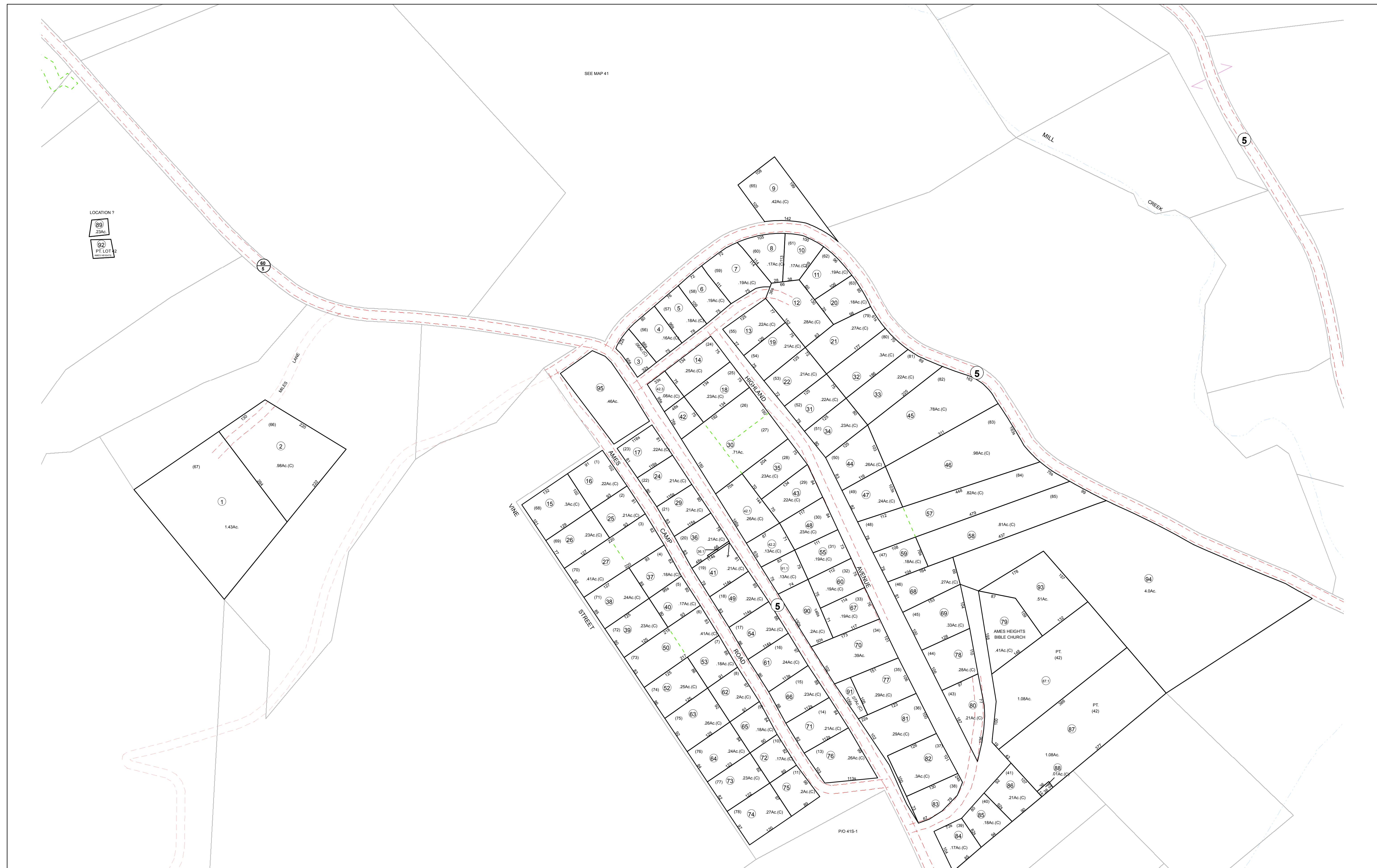
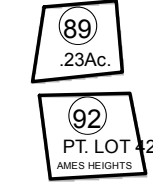


SEE MAP 41

LOCATION ?



Prepared By  
The Office Of The  
**Fayette County Assessor**  
100 Church Street  
Fayetteville, WV 25840  
**FOR TAX PURPOSES ONLY**

**DISCLAIMER**  
This product is for tax purposes only and was not prepared for, nor is it suitable for, legal, engineering, or surveying purposes. Users of this information should review individual parcel records including deeds, survey maps or plats, and legal property descriptions for definitive parcel location information. This map is not a valid survey plat and the data on this map does not imply any official status to such data. The State of West Virginia and county assessor's office assume no liability that might result from the use of this map.

LEGEND	
Property Line	—
Roadway	— — — —
Water	~ ~ ~ ~
District/Corporation Line	- - - -
County Line	— — — —
Land Hook	Z
Original Lot Line/Interior Tract	- - - -
Deed Lot Number	(15)
Parcel or Index Number	Ⓜ
Improvement	○
Railroad	— + — + — +
Scaled Dimension	123s
Deeded Acreage	12.34Ac.
Calculated Area	12.34Ac.(C)

REVISIONS	

RESTRICTIONS	

MAP KEY	
05-36L	01-41M
05-36R	01-41S
01-49D	01-50A

STATE OF WEST VIRGINIA  
**FAYETTE COUNTY**  
FAYETTEVILLE, WEST VIRGINIA  
Coordinate System: NAD 1983, WV State Plane South

**NEW HAVEN DISTRICT**  
**MAP 41M**  
Map Date: 04/18/2019  
Scale: 1inch = 100 feet