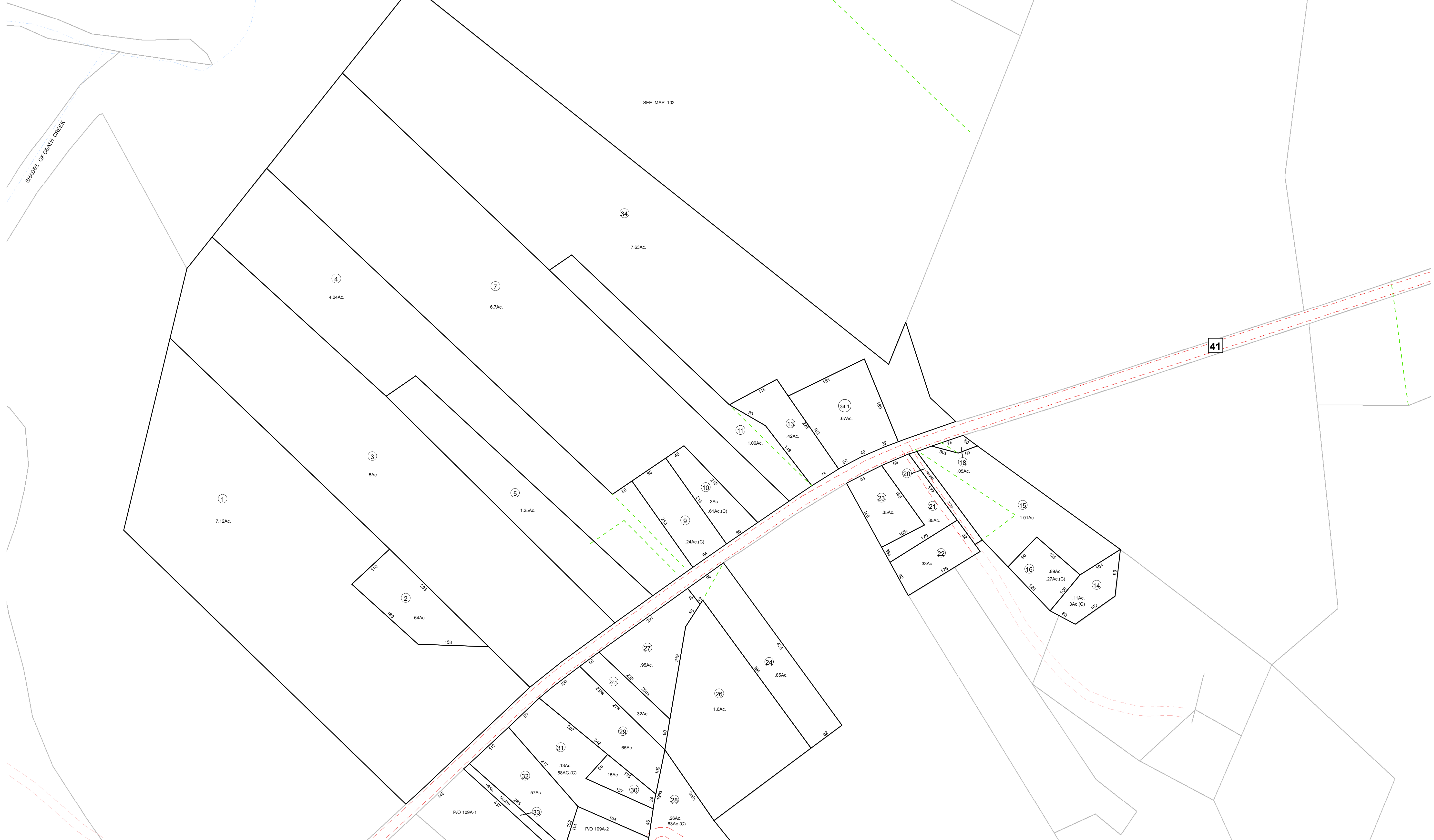


FLOATER
35 53 Ac.



Prepared By
The Office Of The
Fayette County Assessor
100 Church Street
Fayetteville, WV 25840
FOR TAX PURPOSES ONLY

DISCLAIMER

This product is for tax purposes only and was not prepared for, nor is it suitable for, legal, engineering, or surveying purposes. Users of this information should review individual parcel records including deeds, survey maps or plats, and legal property descriptions for definitive parcel location information. This map is not a valid survey plat and the data on this map does not imply any official status to such data. The State of West Virginia and county assessor's office assume no liability that might result from the use of this map.

LEGEND

Property Line	—	Deed Lot Number	(15)
Roadway	—	Parcel or Index Number	15
Water	—	Improvement	○
District/Corporation Line	—	Railroad	—
County Line	—	Scaled Dimension	123s
Land Hook	Z	Deeded Acreage	12.34Ac.
Original Lot Line/Interior Tract	—	Calculated Area	12.34Ac.(C)

REVISIONS

RESTRICTIONS

MAP KEY

01-102N	01-102P
01-109A	

STATE OF WEST VIRGINIA
FAYETTE COUNTY
FAYETTEVILLE, WEST VIRGINIA
Coordinate System: NAD 1983, WV State Plane South

NEW HAVEN DISTRICT
MAP 102N
Map Date: 05/09/2017
Scale: 1inch = 100 feet