



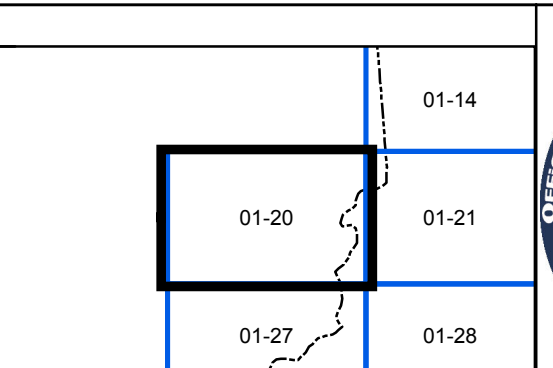
**FOR TAX PURPOSES ONLY**  
**LANDMARK**  
 geospatial  
A Division of Landmark Forestry LLC

Legend		
	District Boundary	Dead lot Number (15)
	Previous Deed	Parcel or Index Number (9)
	Property	Unknown (2)
	Road Easement	Improvement (0)
	Railroad Right of Way	Cemetery (1)
	Road Right of Way	Church (1)
	River	Educational (1)

**Restriction**

All tax maps created under the provisions of reappraisal legislation are the property of the Assessor of Gilmer County, West Virginia and the reproduction, copying, modification, distribution or sale of such tax maps or any copies thereof without the written permission of the Gilmer County Assessor is prohibited by law.

Revisions					
1	DS	10/23/1975	10	19	28
2	RLB	7/1/1985	11	20	29
3	NK	4/12/1992	12	21	30
4	S & H	6/9/2006	13	22	31
5			14	23	32
6			15	24	33
7			16	25	34
8			17	26	35
9			18	27	36



**GILMER COUNTY**  
 Assessor's Office  
 Melissa Jedamski, Assessor  
 GLENVILLE, WV

**CENTER**  
 District 01      Map No. 20  
 Date of Publication: 2/13/2019  
 Scale: 1"=400'