



FOR TAX PURPOSES ONLY

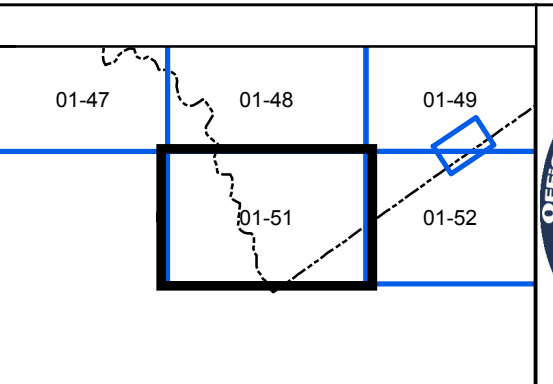
LANDMARK geospatial
A Division of Landmark Forestry LLC

Legend	
	District Boundary
	Previous Deed
	Property
	Road Easement
	Railroad Right of Way
	Road Right of Way
	River
	Dead lot Number
	Parcel or Index Number
	Unknown
	Improvement
	Cemetery
	Church
	Educational

Restriction

All tax maps created under the provisions of reappraisal legislation are the property of the Assessor of Gilmer County, West Virginia and the reproduction, copying, modification, distribution or sale of such tax maps or any copies thereof without the written permission of the Gilmer County Assessor is prohibited by law.

Revisions			
1	11/26/1963	10	19
2	DF 7/1/1981	11	20
3	NCS 7/1/1982	12	21
4	DF 7/1/1983	13	22
5	RLB 7/1/1985	14	23
6	TLB 1/1/1989	15	24
7	HD 4/1/1995	16	25
8	JEB 4/1/1996	17	26
9		18	27
			28
			29
			30
			31
			32
			33
			34
			35
			36



GILMER COUNTY
Assessor's Office
Melissa Jedamski, Assessor
GLENVILLE, WV

CENTER
District 01 Map No. 51
Date of Publication: 2/13/2019
Scale: 1"=400'