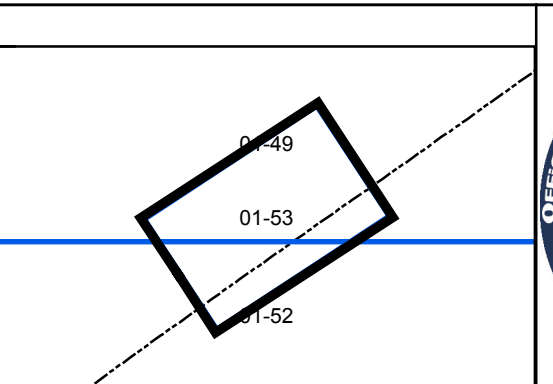


Legend	
	District Boundary
	Previous Deed
	Property
	Road Easement
	Railroad Right of Way
	Road Right of Way
	River
	Dead lot Number
	Parcel or Index Number
	Unknown
	Improvement
	Cemetery
	Church
	Educational

**Restriction**

All tax maps created under the provisions of reappraisal legislation are the property of the Assessor of Gilmer County, West Virginia and the reproduction, copying, modification, distribution or sale of such tax maps or any copies thereof without the written permission of the Gilmer County Assessor is prohibited by law.

Revisions	
1	11/26/1963
2	DS 10/28/1975
3	BH 4/21/1977
4	NCS 7/1/1982
5	RLB 7/1/1985
6	DF 7/1/1986
7	DF 7/1/1987
8	REK 4/27/2000
9	
10	
11	
12	
13	
14	
15	
16	
17	
18	
19	
20	
21	
22	
23	
24	
25	
26	
27	
28	
29	
30	
31	
32	
33	
34	
35	
36	



**GILMER COUNTY**  
Assessor's Office  
Melissa Jedamski, Assessor  
GLENNVILLE, WV

**CENTER**  
District 01      Map No. 53  
Date of Publication: 2/13/2019  
Scale: 1"=100'