

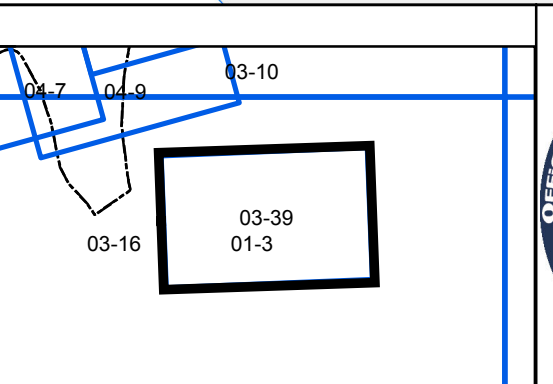
FOR TAX PURPOSES ONLY
LANDMARK
 geospatial
A Division of Landmark Forestry LLC

Legend	
	District Boundary
	Previous Deed
	Property
	Road Easement
	Railroad Right of Way
	Road Right of Way
	River
	Dead lot Number (15)
	Parcel or Index Number (9)
	Unknown
	Improvement
	Cemetery
	Church
	Educational

Restriction

All tax maps created under the provisions of reappraisal legislation are the property of the Assessor of Gilmer County, West Virginia and the reproduction, copying, modification, distribution or sale of such tax maps or any copies thereof without the written permission of the Gilmer County Assessor is prohibited by law.

Revisions	
1	1/23/1963
2	DF 7/1/1981
3	NGK 1/19/1991
4	SAJ 5/8/1994
5	HD 4/1/1995
6	REK 5/2/2002
7	S & H 4/20/2003
8	
9	
10	
11	
12	
13	
14	
15	
16	
17	
18	
19	
20	
21	
22	
23	
24	
25	
26	
27	
28	
29	
30	
31	
32	
33	
34	
35	
36	



GILMER COUNTY
 Assessor's Office
 Melissa Jedamski, Assessor
 GLENVILLE, WV

GLENVILLE
 District 03 Map No. 39
 Date of Publication: 2/13/2019
 Scale: 1"=100'