

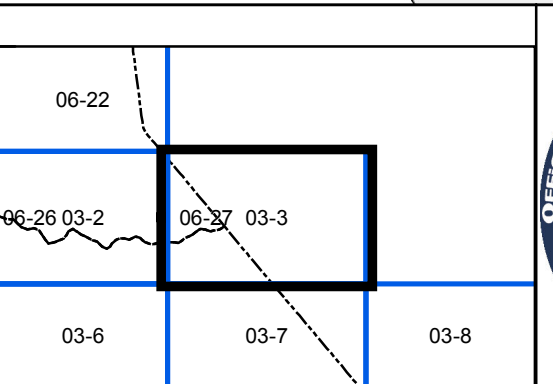
**FOR TAX PURPOSES ONLY**  
**LANDMARK**  
 geospatial  
A Division of Landmark Forestry LLC

Legend	
	District Boundary
	Previous Deed
	Property
	Road Easement
	Railroad Right of Way
	Road Right of Way
	River
	Dead lot Number (15)
	Parcel or Index Number (9)
	Unknown
	Improvement
	Cemetery
	Church
	Educational

**Restriction**

All tax maps created under the provisions of reappraisal legislation are the property of the Assessor of Gilmer County, West Virginia and the reproduction, copying, modification, distribution or sale of such tax maps or any copies thereof without the written permission of the Gilmer County Assessor is prohibited by law.

Revisions					
1	TRL 7/1/1981	10	19	28	
2		11	20	29	
3		12	21	30	
4		13	22	31	
5		14	23	32	
6		15	24	33	
7		16	25	34	
8		17	26	35	
9		18	27	36	



**GILMER COUNTY**  
 Assessor's Office  
 Melissa Jedamski, Assessor  
 GLENVILLE, WV

**TROY**  
 District 06      Map No. 27  
 Date of Publication: 2/13/2019  
 Scale: 1"=400'