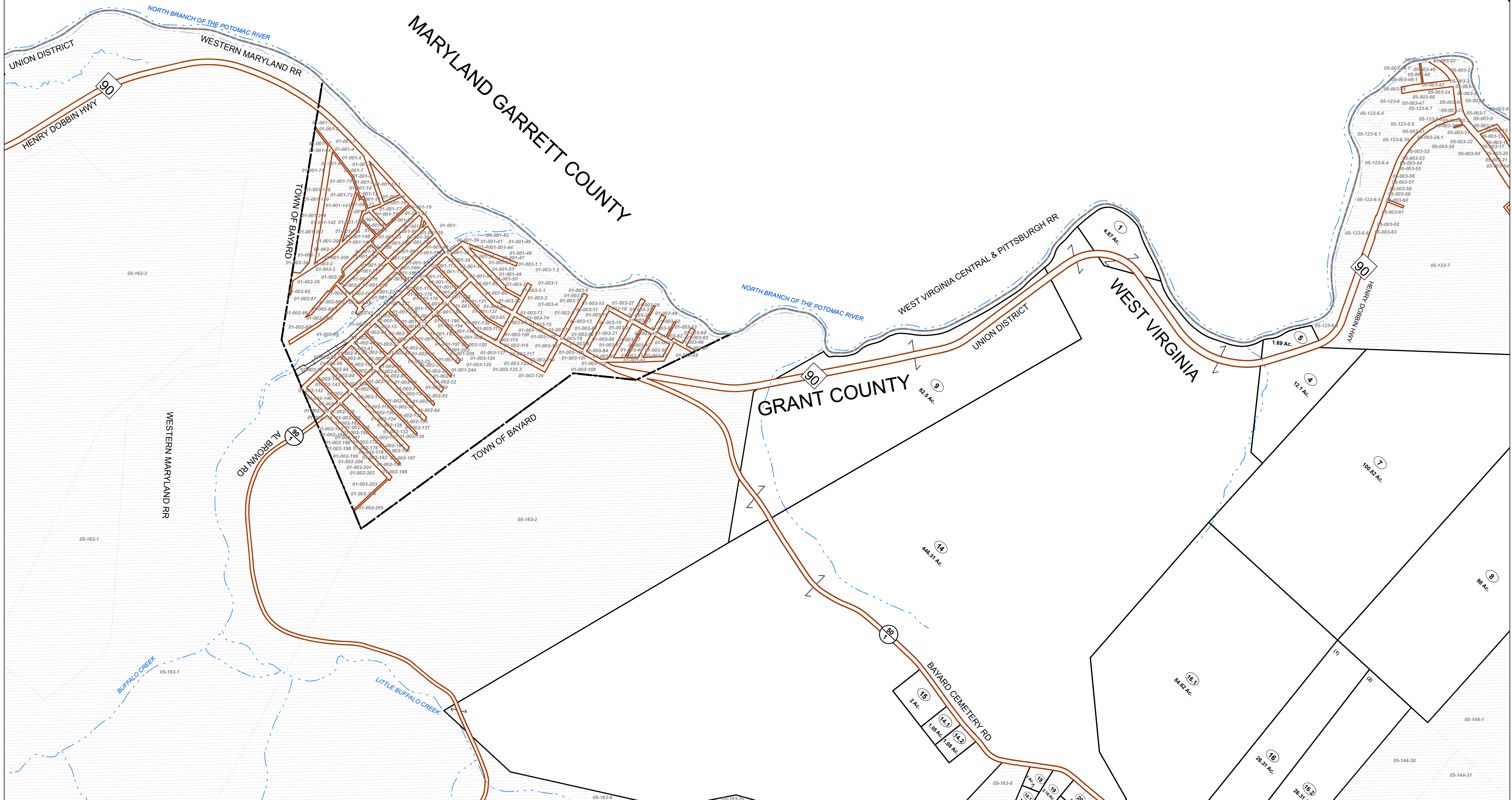


GARRETT COUNTY

MARYLAND



FOR TAX PURPOSES ONLY

Prepared By:

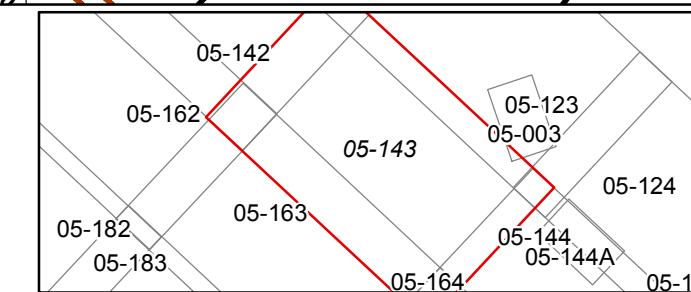
Ralph Layton
Grant County Assessor

Legend

Property Line	—	Original Lot Line	---
Road Right of Way	—	Lot Number (15)	---
Corporation Line	—	Parcel Number (99)	---
District Line	—	Water	---
County Line	—	Railroad	---

R	1	Revised 10/1/16	9	17
G	2	Revised 1/30/2019	10	18
V	3		11	19
I	4		12	20
S	5		13	21
I	6		14	22
O	7		15	23
N	8		16	24

STATE OF WEST VIRGINIA
COUNTY OF GRANT
Office of Assessor



UNION
Map: 143

Date, Aerial Photography: 2015

Date, Map: 1/30/2019

Scale: 1" = 400'