

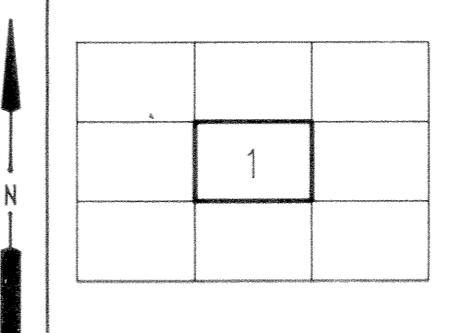
West Virginia State Tax Department
 For Tax Purposes Only
 Base Mapping - Prepared By
Penree, Inc.
 Oak Hill, West Virginia
 Cadastral Mapping - Prepared By
Brackenrich & Associates, Inc.
 Lewisburg, West Virginia

LEGEND	
Property line	Original lot line or interior tract
Roadway	Deed lot number (15)
Water	Parcel or index number (8)
Corporation line	Improvement (o)
District line	Railroad
County line	Scaled dimension
State line	Deed (d)
Land hook	Calculated area (c)

RESTRICTION

All tax maps created under the provisions of reappraisal legislation are the property of the State of West Virginia and the reproduction, copying, distribution or sale of such tax maps or any copies thereof without the written permission of the State Tax Commissioner is prohibited by law.

REVISIONS	



GREENBRIER COUNTY
 STATE OF WEST VIRGINIA
 Lewisburg, West Virginia

GREENBRIER COUNTY
INDEX MAP
 DEPT. OF TAX AND REVENUE COPY
 Scale: 1" = 10,560' (TWO MILES)