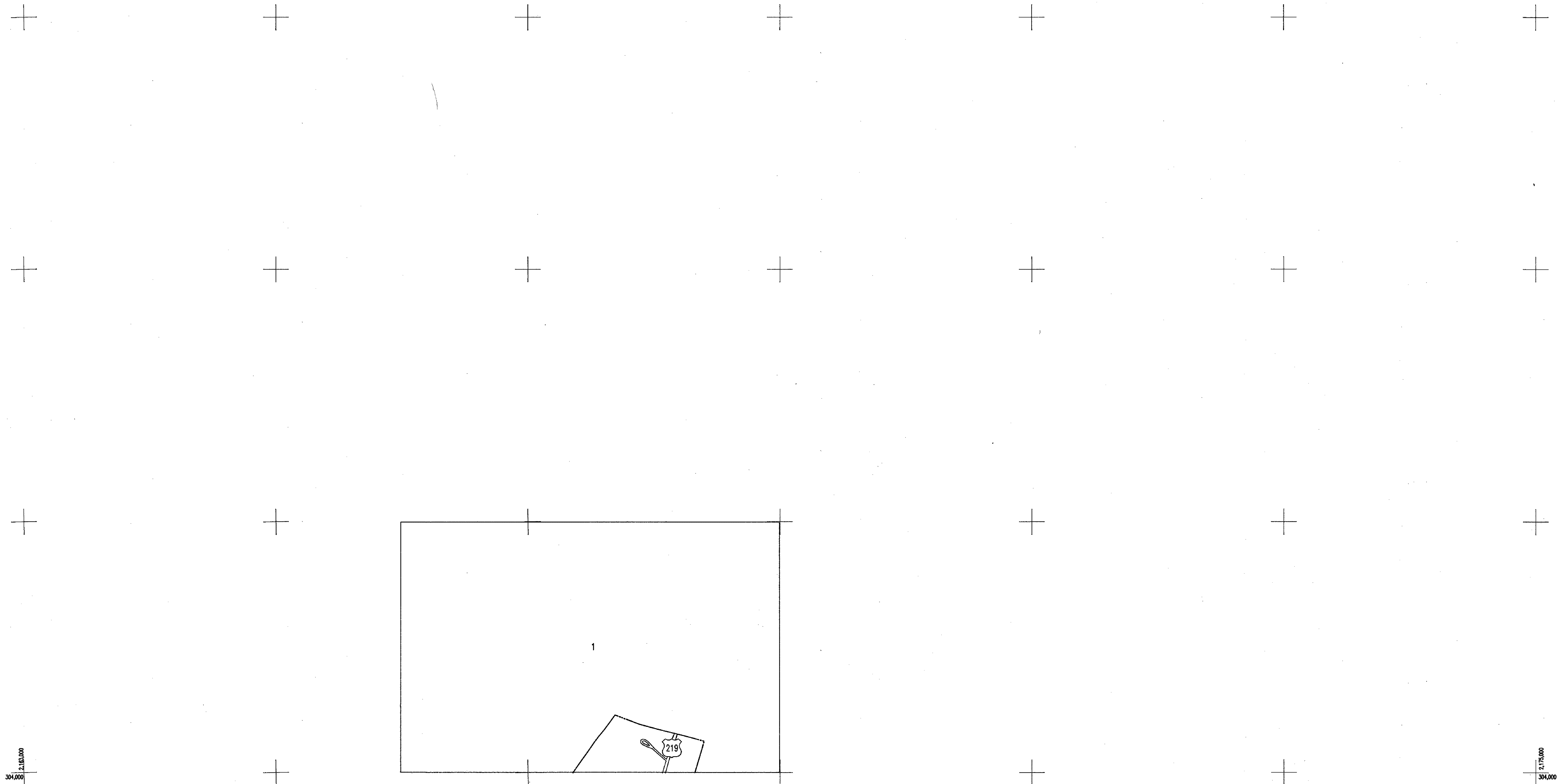


312,000
216,000

312,000
2175,000



304,000
211,833,000

304,000
2175,000

West Virginia State Tax Department
 For Tax Purposes Only
 Base Mapping - Prepared By
Penree, Inc.
 Oak Hill, West Virginia
 Cadastral Mapping - Prepared By
Brackenrich & Associates, Inc.

LEGEND

Property line	—	Original lot line or interior tract	(15)
Roadway	—	Deed lot number	Ⓢ
Water	~	Parcel or index number	⓪
Corporation line	—	Improvement	⓪
District line	—	Railroad	—
County line	—	Scaled dimension	s

RESTRICTION

All tax maps created under the provisions of reappraisal legislation are the property of the State of West Virginia and the reproduction, copying, distribution or sale of such tax maps or any copies thereof without the written permission of the State

REVISIONS

	1	
2	3	

GREENBRIER COUNTY
 STATE OF WEST VIRGINIA

LEWISBURG CORPORATION
 INDEX
 MAP 1 of 5