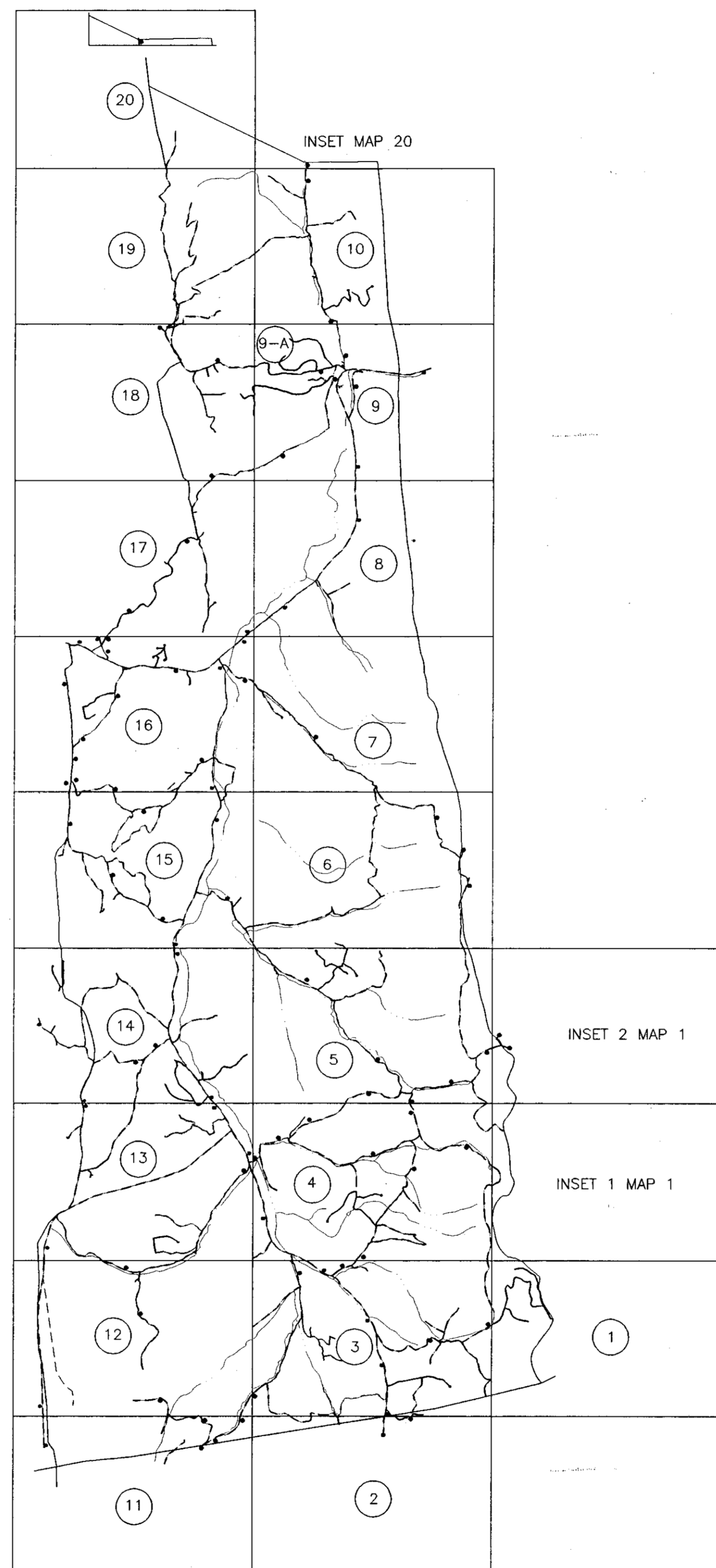


SPRINGFIELD DISTRICT

MINERAL COUNTY

ROMNEY DISTRICT

HARDY COUNTY



WV LEGISLATIVE REGULATION  
 TITLE 189 SERIES 5 1991  
 ARTICLE 5 SECTION 5.1

Reproduction of tax maps prohibited -  
 No person may reproduce, copy, distribute  
 or sell copies of tax maps prepared by  
 the counties without having first obtained  
 the written permission of the county  
 assessor.



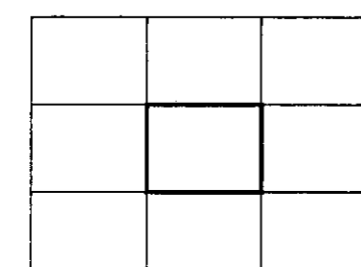
Legend

|                  |           |                                     |       |
|------------------|-----------|-------------------------------------|-------|
| Property line    | —————     | Original lot line                   | ----- |
| Edge of Pavement | - - - - - | Deed lot number in parenthesis (15) |       |
| Corporation line | -----     | Parcel or index number              | ⊙     |
| District line    | -----     | Improvement                         | ○     |
| County line      | -----     | Railroad                            | +++++ |
| State line       | -----     |                                     |       |

Revisions

|   |                   |     |    |
|---|-------------------|-----|----|
| 1 | AS OF JULY 1 1996 | KWS | 9  |
| 2 | AS OF JULY 1 1997 | KWS | 10 |
| 3 |                   |     | 11 |
| 4 |                   |     | 12 |
| 5 |                   |     | 13 |
| 6 |                   |     | 14 |
| 7 |                   |     | 15 |
| 8 |                   |     | 16 |

MAP REFERENCE



HAMPSHIRE COUNTY - WEST VIRGINIA

Office of Assessor

For Tax Purposes Only

MILL CREEK

INDEX

Map No.: \_\_\_\_\_ FILE NAME: MILLCREEK-INDEX.DWG

Date, Aerial Photography: 4/59 Date of Map: 12/59

Photo No.: \_\_\_\_\_ Scale: 1" = 400'