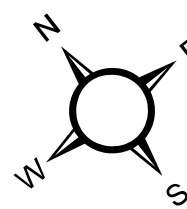


**WV LEGISLATIVE REGULATION  
TITLE 189 SERIES 2009**

**Disclaimer:** This tax map was compiled for purposes of taxation from available record evidence and has not been field verified. This map is not a valid survey plat and the data on this map does not imply any official status to such data. The State of West Virginia and county assessors' office assume no liability that might result from the use of this map.

**Restrictions:** All finished tax maps created under the provisions of legislation are the property of the county assessors who created them and the reproduction, copying, distribution, sale, or lease of such tax maps or copies thereof without the written permission of the respective county assessors is prohibited by law.



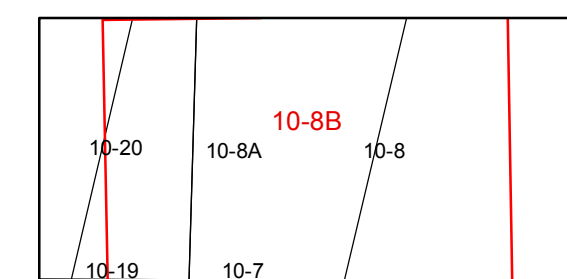
Legend			
Corporation line	---	Railroad	—+—
District line	- - -	Lot line	—
County line	—	Road Centerline	—+—
State line	—	Streams	—
Property Line	—	Trans Line	—
Right of Way	—	Cemetery	—
		School	—
		Church	—
		Deed lot number (25)	—
		Parcel or index number (23)	—
		Parcel acreage	527.5

**Revisions**

1 AS OF JULY 1 1996 KWS	6 AS OF JULY 1 2001 JVB	11 AS OF JULY 1 2007 JVB
2 AS OF JULY 1 1997 KWS	7 AS OF JULY 1 2002 JVB	12 AS OF JULY 1 2008 RIR
3 AS OF JULY 1 1998 JVB	8 AS OF JULY 1 2003 JVB	13 AS OF JULY 1 2011 ASC
4 AS OF JULY 1 1999 JVB	9 AS OF JULY 1 2004 JVB	14 AS OF MAR 29 2012 ASC
5 AS OF JULY 1 2000 JVB	10 AS OF JULY 1 2005 JVB	15 AS OF JAN 1 2013 ASC
		16 AS OF JAN 1 2014 ASC
		17 AS OF JAN 1 2015 ASC
		18 AS OF JAN 1 2017 ASC
		19 AS OF JAN 31 2019 AGD

**STATE OF WEST VIRGINIA  
COUNTY OF HAMPSHIRE**

Office of Assessor



**Springfield**

Map: 8B

Created: 1/31/2019

Scale: 1 in = 100 ft