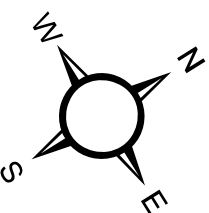


**WV LEGISLATIVE REGULATION
TITLE 189 SERIES 2009**

Disclaimer: This tax map was compiled for purposes of taxation from available record evidence and has not been field verified. This map is not a valid survey plat and the data on this map does not imply any official status to such data. The State of West Virginia and county assessors' office assume no liability that might result from the use of this map.

Restrictions: All finished tax maps created under the provisions of legislation are the property of the county assessors who created them and the reproduction, copying, distribution, sale, or lease of such tax maps or copies thereof without the written permission of the respective county assessors is prohibited by law.



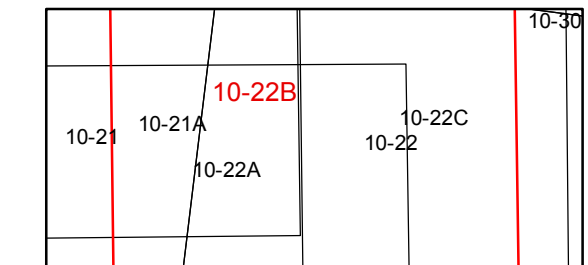
Legend

Corporation line	---	Railroad	—+—	School	Ⓜ
District line	---	Lot line	---	Church	Ⓢ
County line	---	Road Centerline	---	Deed lot number (25)	25
State line	---	Streams	---	Parcel or index number (92)	92
Property Line	---	Trans Line	---	Parcel acreage	527.1
Right of Way	---	Cemetery	---		

Revisions

1 AS OF JULY 1 1996 KWS	6 AS OF JULY 1 2001 JVB	11 AS OF JULY 1 2007 JVB	16 AS OF JAN 1 2014 ASC
2 AS OF JULY 1 1997 KWS	7 AS OF JULY 1 2002 JVB	12 AS OF JULY 1 2008 RIR	17 AS OF JAN 1 2015 ASC
3 AS OF JULY 1 1998 JVB	8 AS OF JULY 1 2003 JVB	13 AS OF JULY 1 2011 ASC	18 AS OF JAN 1 2017 ASC
4 AS OF JULY 1 1999 JVB	9 AS OF JULY 1 2004 JVB	14 AS OF MAR 29 2012 ASC	19 AS OF JAN 31 2019 AGD
5 AS OF JULY 1 2000 JVB	10 AS OF JULY 1 2005 JVB	15 AS OF JAN 1 2013 ASC	

**STATE OF WEST VIRGINIA
COUNTY OF HAMPSHIRE**
Office of Assessor



Springfield
Map: 22B
Created: 1/31/2019
Scale: 1 in = 100 ft