

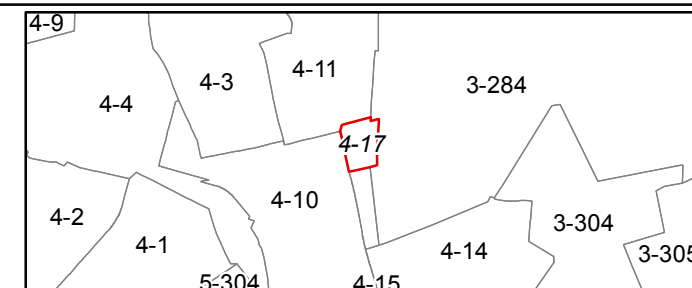
FOR TAX PURPOSES ONLY  
Prepared by Hardy County, WV

**Legend**

Property Line	—	Original Lot Line	- - - - -
Road Right of Way	—	Lot Number	(15)
Corporation Line	—	Parcel Number	(99)
District Line	—	Water	- - - - -
County Line	—	Railroad	—+—+—+—

R	1	Revised 7/8/2014	9	17
O	2		10	18
V	3		11	19
I	4		12	20
S	5		13	21
I	6		14	22
O	7		15	23
N	8		16	24

**STATE OF WEST VIRGINIA**  
**COUNTY OF HARDY**  
Office of Assessor



**MOOREFIELD CORP**  
**SHEET 17**  
Date, Aerial Photography: 2003  
Date, Map: 2/2/2018  
Scale: 1" = 100'