

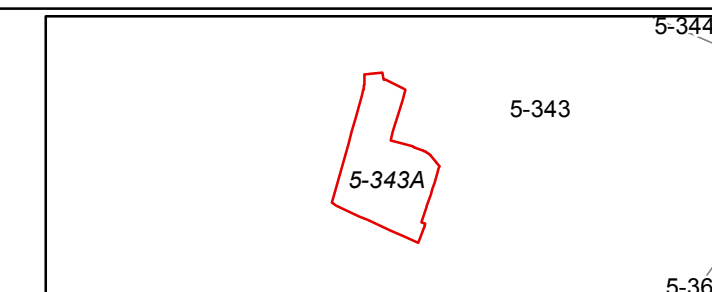


FOR TAX PURPOSES ONLY
Prepared by Hardy County, WV

Legend	
Property Line	Original Lot Line
Road Right of Way	Lot Number (15)
Corporation Line	Parcel Number (99)
District Line	Water
County Line	Railroad

R	1	Revised 7/8/2014	9	17
O	2			
V	3			
I	4			
S	5			
I	6			
O	7			
N	8			

STATE OF WEST VIRGINIA
COUNTY OF HARDY
Office of Assessor



SOUTHFORK
SHEET 343A
Date, Aerial Photography: 2003
Date, Map: 2/2/2018
Scale: 1" = 100'