

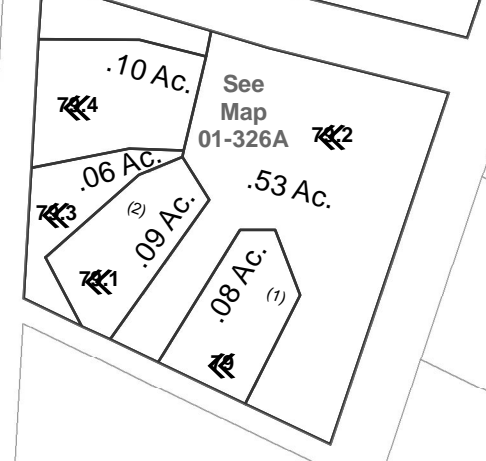


See Map 01-0346

See Map 01-0326

See Map 01-0346

See Map 01-0108



FOR TAX PURPOSES ONLY

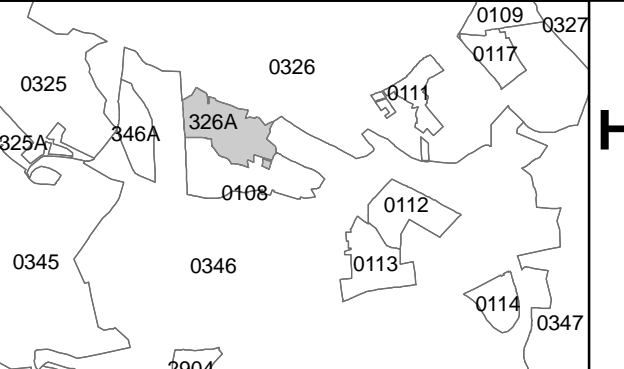
Prepared By:
Joseph R. Romano
 Harrison County Assessor

Legend

Property Line	—————	Original Lot Line	-----
Edge of pavement or roadway	- - - - -	Deed lot number (in parenthesis)	(15)
Corporation line	—————	Parcel or index number	15
District line	- - - - -	Improvement	○
County Line	—————	Railroad	—————
		Water	—————

Restriction

Latest Revision	5/28/2013 2:46:33 PM
All tax maps created under the provisions of reappraisal legislation are the property of the Assessor of Harrison County, West Virginia and the reproduction, copying, modification, distribution or sale of such tax maps or any copies thereof without the written permission of the Harrison County Assessor is prohibited by law.	



HARRISON COUNTY - WEST VIRGINIA
 Office of Assessor

District: Clark District
 Map No: 01-326A
 Date: January 1, 2019
 Scale: 1 inch = 100 feet

01-326A