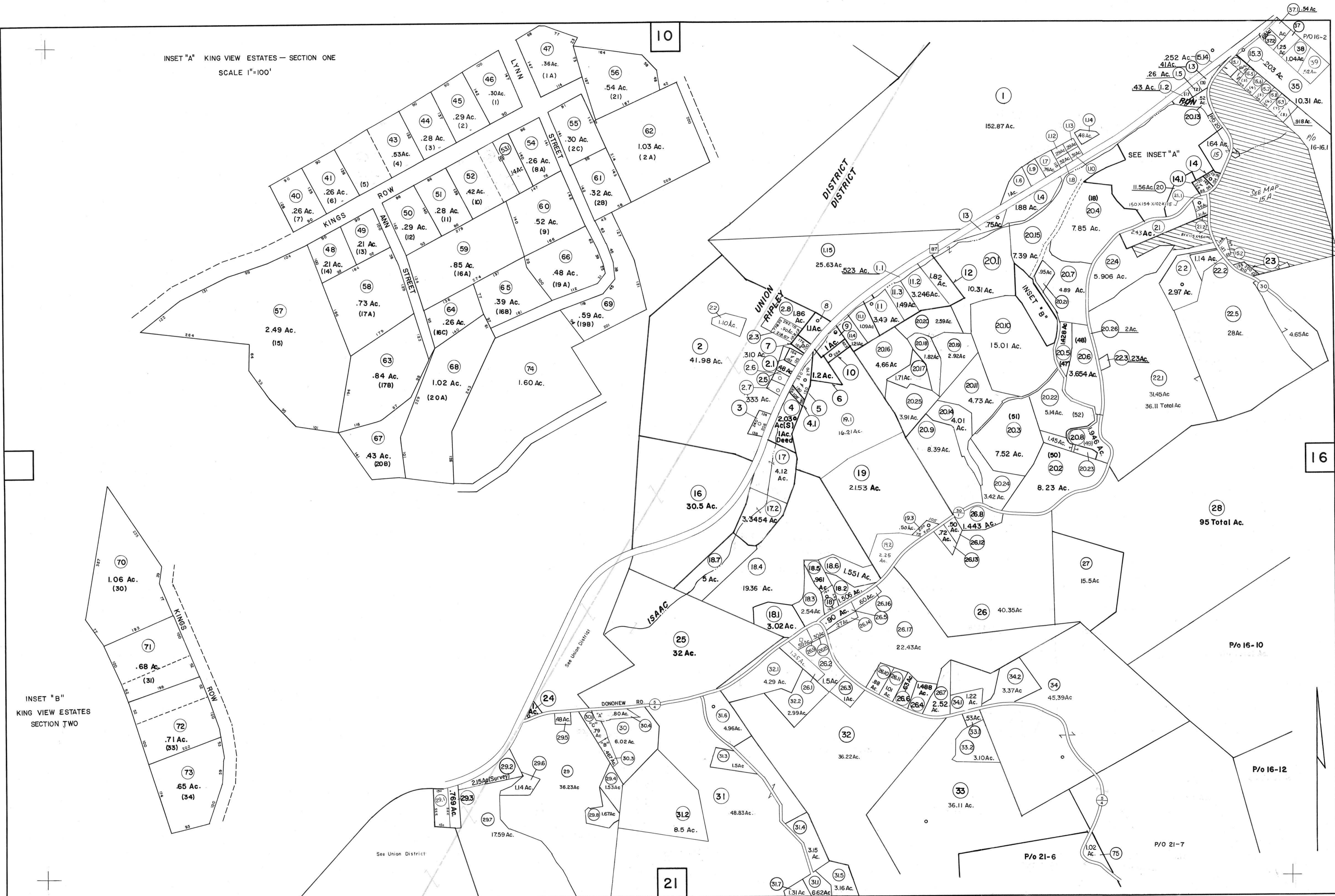


INSET "A" KING VIEW ESTATES — SECTION ONE  
SCALE 1"=100'

INSET "B"  
KING VIEW ESTATES  
SECTION TWO



FOR TAX PURPOSES ONLY  
PREPARED BY  
**AERO SERVICE CORPORATION**  
210 E. COURTLAND STREET PHILADELPHIA, PENNA.

**Legend**

Property line	—	Original lot line	—
Edge of pavement or roadway	---	Deed lot number in parenthesis (15)	( )
Corporation line	----	Parcel or index number in circle	⊙
District line	-----	Improvement	○
County line	-----	Railroad	+

**Revisions**

1	HICKMAN	JUNE 73	PAM	9	OGIS	3-25-91	J.B.	18	OGIS	4/17/99	SAJ
2		2-2-76	T.G.	10	OGIS	3-25-91	J.B.	18		4-00	HD
3		7-7-77	D.H.	11	OGIS	3/2/91	DSH	19		6/12/2001	S.B.H.
4		1/15/80		12	OGIS	5/8/93	DSH	20		4/17/2002	S.B.H.
5		Revised to 7-1-88		13	OGIS	3/20/94	SAJ	21		3/21/2003	S.B.H.
6		7/1/85	R.L.B.	14	OGIS	4-96	HD	22		6-14-04	H.S.S.
7		Revised to 7-1-86		15	OGIS	4-97	HD	23		6-16-05	†† 4-5
8		Revised to 7-1-88		16	OGIS	5-98	HD	24		5/30/06	S.B.H.

JACKSON COUNTY — WEST VIRGINIA  
Office of Assessor

**RIPLEY DISTRICT**  
City — Town — District:  
Map No: **15**  
Date, Aerial Photography: 11-26-62 Date, Map: 2-11-65  
Photo No: 2-1506-1508 3-1553-1555 Scale: 1" = 400'