

POTOMAC RIVER

9-19

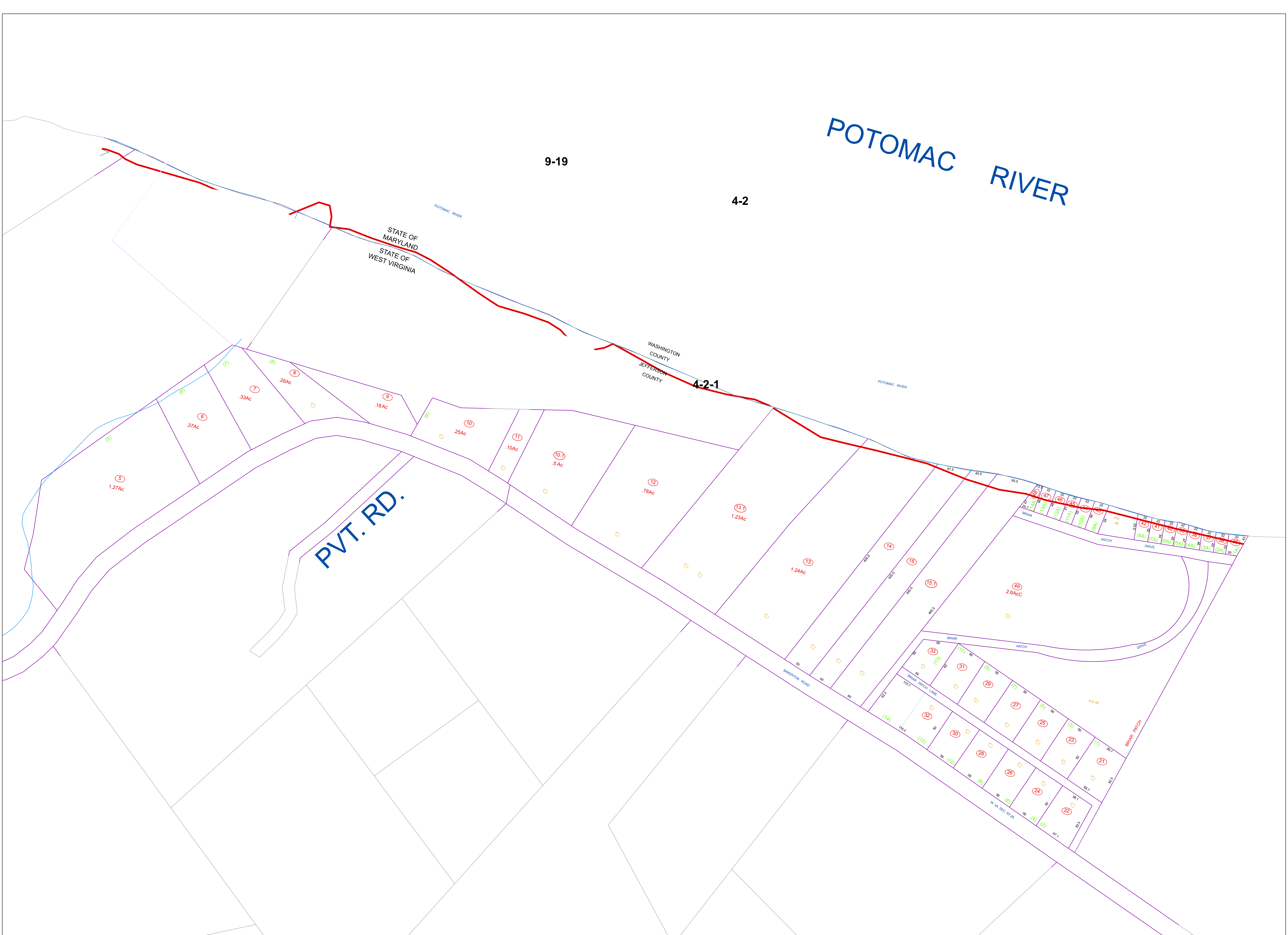
4-2

STATE OF MARYLAND
STATE OF WEST VIRGINIA

WASHINGTON COUNTY
JEFFERSON COUNTY

4-2-1

PVT. RD.



FOR TAX PURPOSES ONLY
PREPARED BY
JEFFERSON COUNTY ASSESSOR'S OFFICE



NOTICE: All tax maps created under the provisions of reappraisal legislation are the property of the State of West Virginia and the Jefferson County Assessor's Office and the reproduction, copying, distribution or sale of such tax maps or any copies thereof, in any format, without written permission is prohibited by law.

LEGEND

- PROPERTY LINE
- CORPORATION LINE
- DISTRICT LINE
- COUNTY LINE
- STREAM
- EASEMENT
- ORIGINAL LOT LINE
- RAILROAD
- DEED LOT NUMBER (15)
- TAX PARCEL NUMBER (16)
- IMPROVEMENT (17)
- PP MOBILE HOME (18)
- DISTRICT NUMBER (19)
- SCALED DIMENSION (20)

REVISIONS

REVISIONS OUTGREW THIS SPACE
AND ARE NOW MAINTAINED IN A
DATABASE

KEY MAP

2	2	2
2	2-1	2
2	2	2

COUNTY OF JEFFERSON
OFFICE OF THE ASSESSOR
CHARLES TOWN, WV
ASSESSOR: Angela Banks
MAPPING SPECIALIST: Victoria Myers

HARPERS FERRY DISTRICT
DISTRICT 4
MAP 2-1