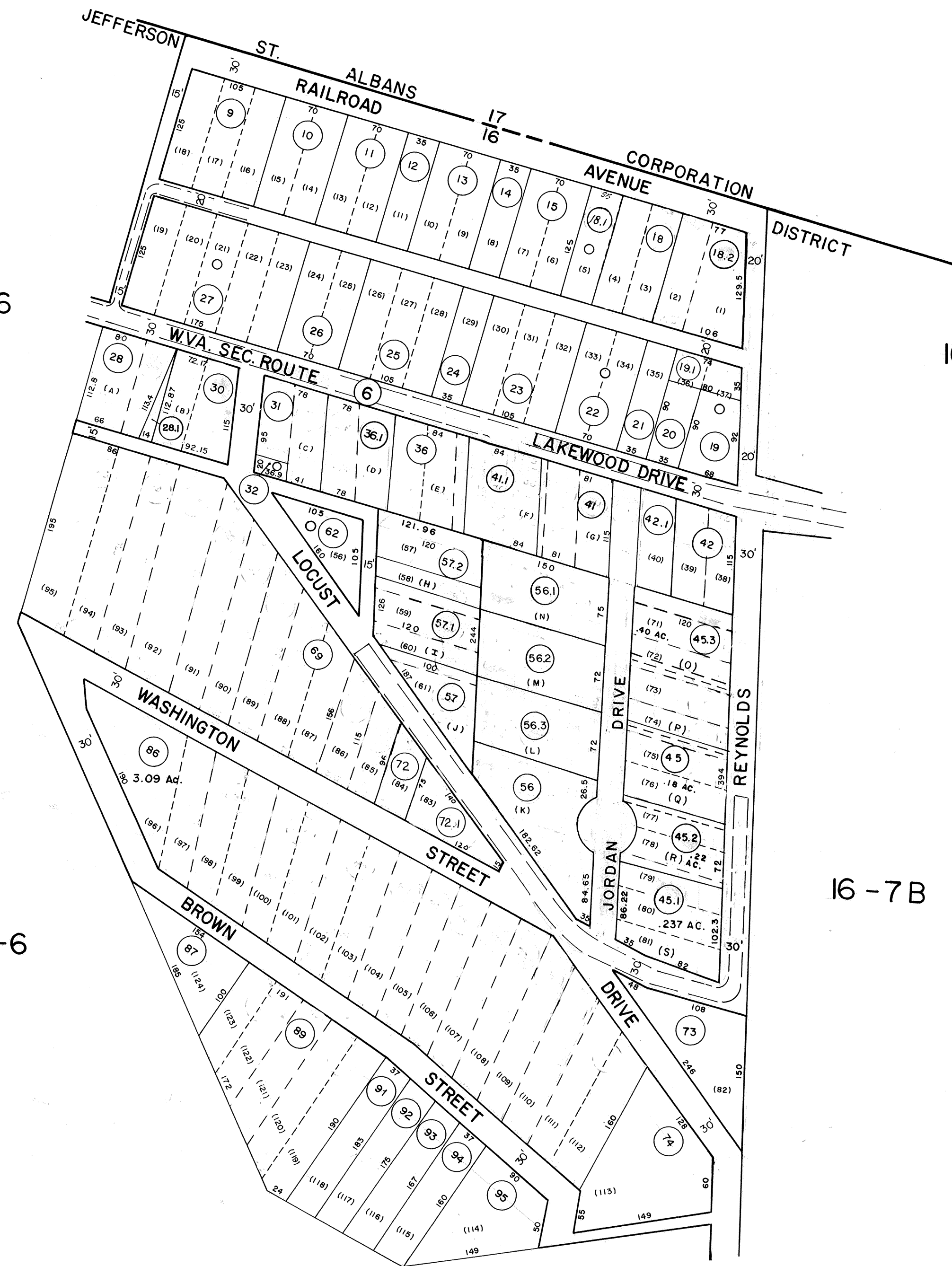


16-6

16-6

16-6

INSET 1



16-6

16-6

16-12 H

16-7B

16-7B

INSET 2

DRAFTED BY: *CM*
CHECKED BY: *ES*

NOTE:
PARCEL NOS. 9,10,11,12,13,14,15,23,24,25,26,27 - EXEMPT
BOARD OF EDUCATION

FOR TAX PURPOSES ONLY

PREPARED BY

AERO SERVICE CORPORATION
A DIVISION OF LITTON INDUSTRIES
210 E. COURTLAND ST. PHILADELPHIA, PA. 19120



AMERICAN AIR SURVEYS, INC.
907 PENN AVENUE, PITTSBURGH 22, PA.
NEW YORK ATLANTA

Legend

Property line	—	Original lot line	—
Right of way line	—	Deed lot number (in parenthesis)	(15)
Edge of pavement or roadway	—	Parcel or index number (in circle)	(10)
Corporation line	—	Improvement	○
District line	—	Railroad	—
County line	—	Scaled Dimension	S
Stream	—	Original block number	(22)

Revisions

No.	Date	By	Description
1	5/12/72	JHP	6-1-97 J.E.B.
2	11 Aug. 73	Pw	1-1-99 J.E.B.
3	1-24-74	T.G.	1-20-2000 J.A.B.
4	July 1982	JK	10-02-02 J.A.B.
5	Revised to 7-1-85	JK	3-1-03 J.A.B.
6	Revised to 7-1-89	RKB	3-24-03 J.A.B.
7	O.G.I.S. 8-1-93	J.E.B.	7-11-04 J.A.B.
8	O.G.I.S. 6-20-96	J.E.B.	11-15-06 J.A.B.

KANAWHA COUNTY
Office of Assessor
CHARLESTON, WEST VIRGINIA

JEFFERSON DISTRICT - 16

Map No. 6Q

Photo No.: 506

Scale: 1" = 100'

Date, Photography: April, May 1964

Date, Map: 9-30-65