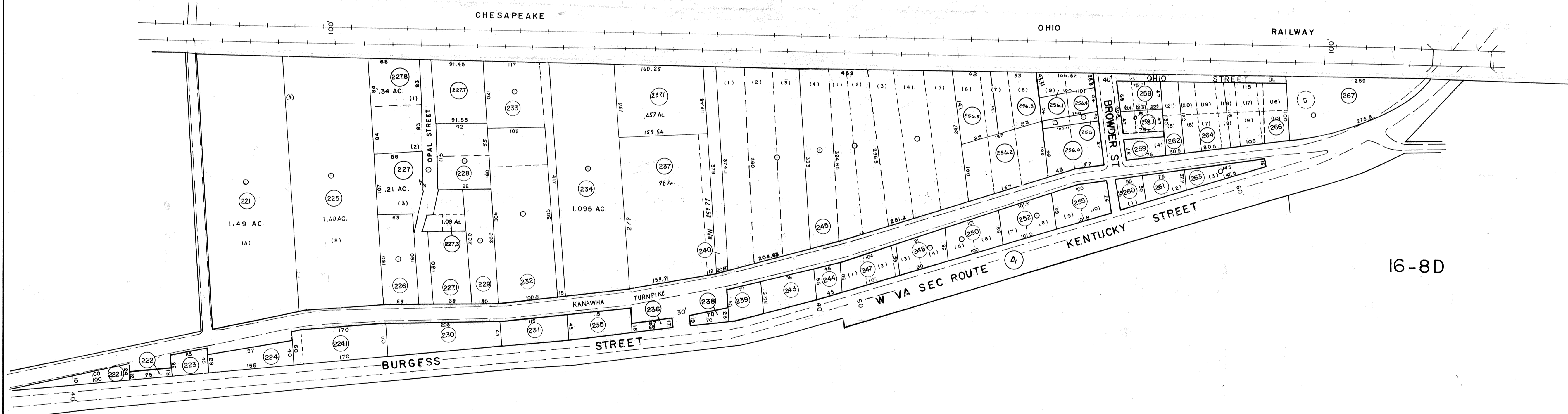


JEFFERSON 8C INSERT



1.49 AC.
(A)

1.40 AC.
(B)

1.09 AC.
(C)

1.095 AC.
(D)

16-8D

16-8B

DRAFTED BY: F.M.
CHECKED BY: ES

FOR TAX PURPOSES ONLY

PREPARED BY

AERO SERVICE CORPORATION
A DIVISION OF LITTON INDUSTRIES
210 E. COURTLAND ST. PHILADELPHIA, PA. 19120



AMERICAN AIR SURVEYS, INC.
907 PENN AVENUE, PITTSBURGH 22, PA.
NEW YORK ATLANTA

Legend

| | | | |
|-----------------------------|-------|------------------------------------|-------|
| Property line | ----- | Original lot line | ----- |
| Right of way line | ===== | Deed lot number (in parenthesis) | (15) |
| Edge of pavement or roadway | ----- | Parcel or index number (in circle) | (22) |
| Corporation line | ----- | Improvement | ○ |
| District line | ----- | Railroad | ----- |
| County line | ----- | Scaled Dimension | S |
| Stream | ~~~~~ | Original block number | (22) |
| | | CALCULATED AREA | CAL |

Revisions

| | | | | | | | |
|---|-------------------|-------|----|---------|-----------|--------|----|
| 1 | 15 SEPT 72 | AJM | 9 | O.G.I.S | 6-20-96 | J.E.B | 17 |
| 2 | 11 SEPT 73 | DAE | 10 | | 6-1-97 | J.E.B | 18 |
| 3 | 212711 | SC | 11 | | 7-15-97 | J.E.B | 19 |
| 4 | 7-82 | LES | 12 | | 1-20-2000 | J.A.B. | 20 |
| 5 | Revised to 7-1-85 | REB | 13 | | 11-18-06 | J.A.B. | 21 |
| 6 | Revised to 7-1-89 | REB | 14 | K.C.A. | 1-1-2014 | | 22 |
| 7 | OGIS 7-26-91 | JB | 15 | | | | 23 |
| 8 | O.G.I.S 8-1-93 | J.E.B | 16 | | | | 24 |

KANAWHA COUNTY
Office of Assessor
CHARLESTON, WEST VIRGINIA

JEFFERSON DISTRICT - 16

Map No. 8C

Photo No.: 504

Scale: 1" = 100'

Date, Photography: April, May 1964

Date, Map: 9-30-65