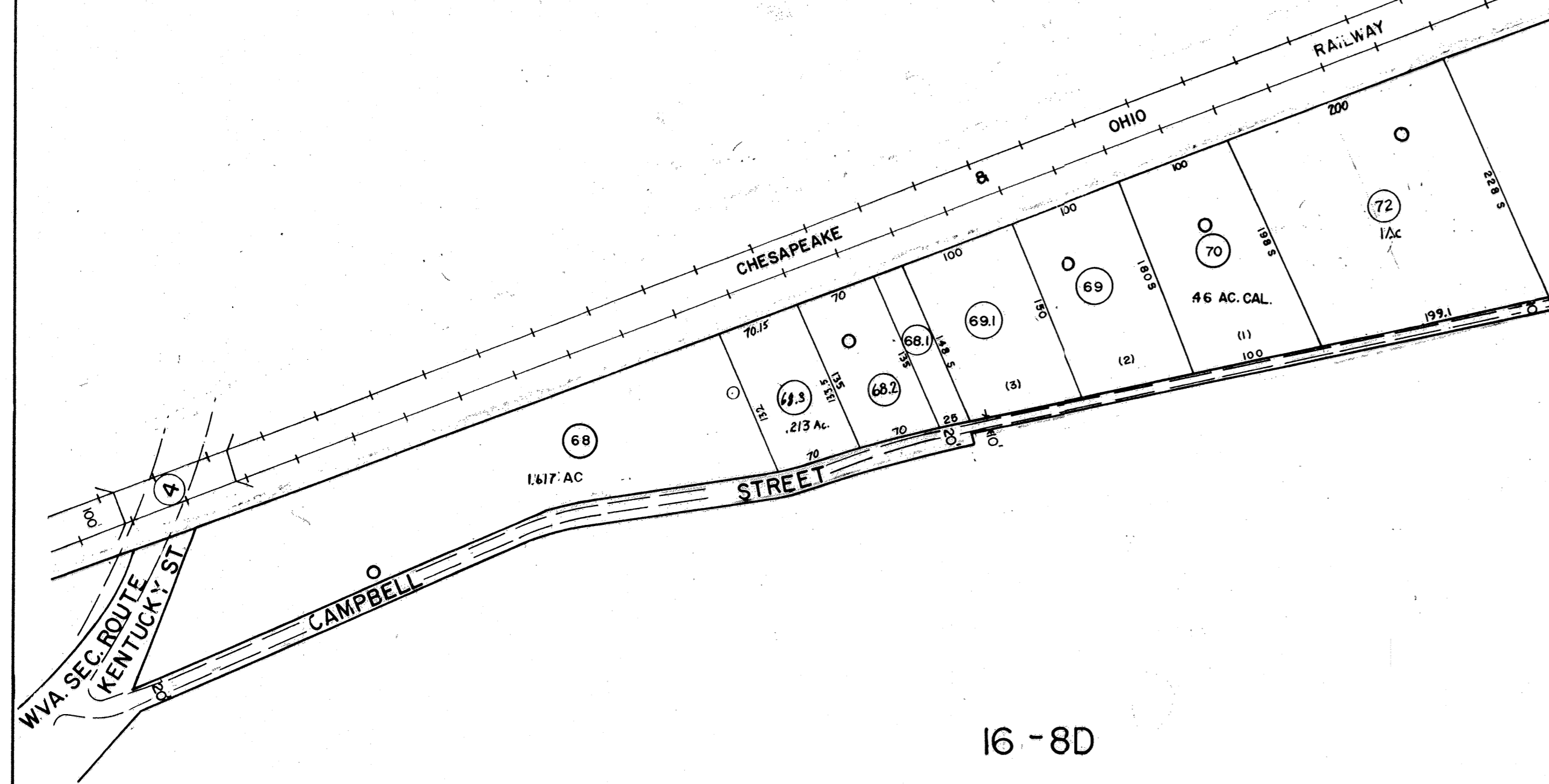


JEFFERSON 8E INSERT

JEFFERSON DISTRICT 16 MAP 8D



16-8D

NOTE:
PARCELS NO. 2, 16, 37, 38, 39 & 43 NOT USED.

DRAFTED BY: B.G.
CHECKED BY: E.S.

FOR TAX PURPOSES ONLY

AERO SERVICE CORPORATION
A DIVISION OF LITTON INDUSTRIES
210 E. COURTLAND ST., PHILADELPHIA, PA. 19120

AMERICAN AIR SURVEYS, INC.
907 PENN AVENUE, PITTSBURGH 22, PA.
NEW YORK ATLANTA

Legend

Property line	—	Original lot line	—
Right of way line	—	Dead lot number (in parenthesis)	(15)
Edge of pavement or roadway	—	Parcel or index number (in circle)	⊙
Corporation line	—	Improvement	○
District line	—	Railroad	—+—
County line	—	Scaled Dimension	S
Stream	—	Original block number	⊙
		CALCULATED AREA	CAL

Revisions

1	16 Sept. 72	J.M.	9	O.G.I.S.	8-1-93	J.E.B.	17
2	10-1-75	J.C.	10	O.G.I.S.	6-20-96	J.E.B.	18
3	1/25/79	D.C.	11		6-1-97	J.E.B.	19
4	7-82	L.B.	12		7-15-97	J.E.B.	20
5	Revised to 7-1-85	S.P.	13		11-18-06	J.A.B.	21
6	Revised to 7-1-87	S.P.	14				22
7	Revised to 7-1-87	S.P.	15				23
8	O.G.I.S.	7-26-91	J.B.	16			24

KANAWHA COUNTY
Office of Assessor
CHARLESTON, WEST VIRGINIA

JEFFERSON DISTRICT — 16

Map No. 8E

Photo No.: 502 & 504 Scale: 1" = 100'
Date, Photography: April, May 1964 Date, Map: 9-30-65