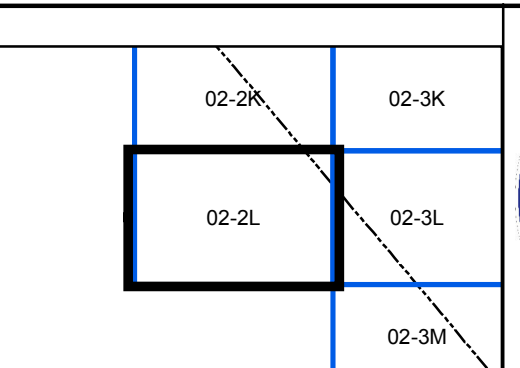


FOR TAX PURPOSES ONLY
LANDMARK
 geospatial
A Division of Landmark Forestry LLC

Legend		
-----	District Boundary	
-----	Previous Deed	
-----	Property	
-----	Road Easement	
-----	Railroad Right of Way	
-----	Road Right of Way	
-----	River	
⑨	Deed lot Number	(15)
⑨	Parcel or Index Number	
□	Unknown	
○	Improvement	
†	Cemetery	
⚓	Church	
⚓	Educational	

Restriction
 REPRODUCTION OF TAX MAPS PROHIBITED
 - It is unlawful to copy, photocopy, scan, photograph, or otherwise reproduce this tax map. Pursuant to the provisions of W.Va. CSR § 189-5-5 (2013) no person may reproduce, copy, distribute or sell copies of tax maps prepared by the counties without having first obtained the written permission of the Lewis County Assessor. In addition to other penalties and civil remedies, any person who, without the written permission of the Lewis County Assessor, reproduces, copies, distributes, or sells or who allows the reproduction, copying, distribution or sale of tax maps prepared by the Lewis County Assessor, shall be refused permission by the Lewis County Assessor or Assessor's agent to purchase tax maps in the future.

Revisions			
1	10	19	28
2	11	20	29
3	12	21	30
4	13	22	31
5	14	23	32
6	15	24	33
7	16	25	34
8	17	26	35
9	18	27	36



LEWIS COUNTY
 Assessor's Office
John L. Breen, Assessor
 WESTON, WV

COURTHOUSE
 District 02 Map No. 2L
 Date of Publication: 2/20/2019
 Scale: 1" = 400'