

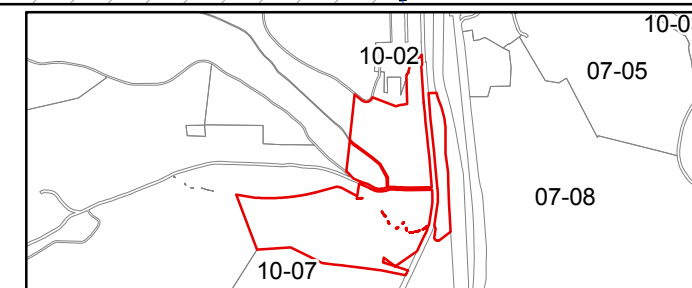
FOR TAX PURPOSES ONLY
Prepared by Lincoln County, WV

Legend

Property Line	Original Lot Line
Road Right of Way	Lot Number (15)
Corporation Line	Parcel Number (99)
District Line	Water
County Line	Railroad

R	1	Revised 5/12/65	9	Revised 1/28/2019	17
O	2	Revised 7/1/81	10		18
V	3	Revised 7/1/84	11		19
I	4	Revised 7/1/87	12		20
S	5	Revised 7/1/89	13		21
J	6	Revised 7/1/96	14		22
O	7	Revised 12/30/2016	15		23
N	8	Revised 8/24/2018	16		24

STATE OF WEST VIRGINIA
COUNTY OF LINCOLN
Office of Assessor



WEST HAMLIN CORPORATION
SHEET 06
Date, Aerial Photography: 2003
Created: 1/28/2019
Scale: 1" = 100'