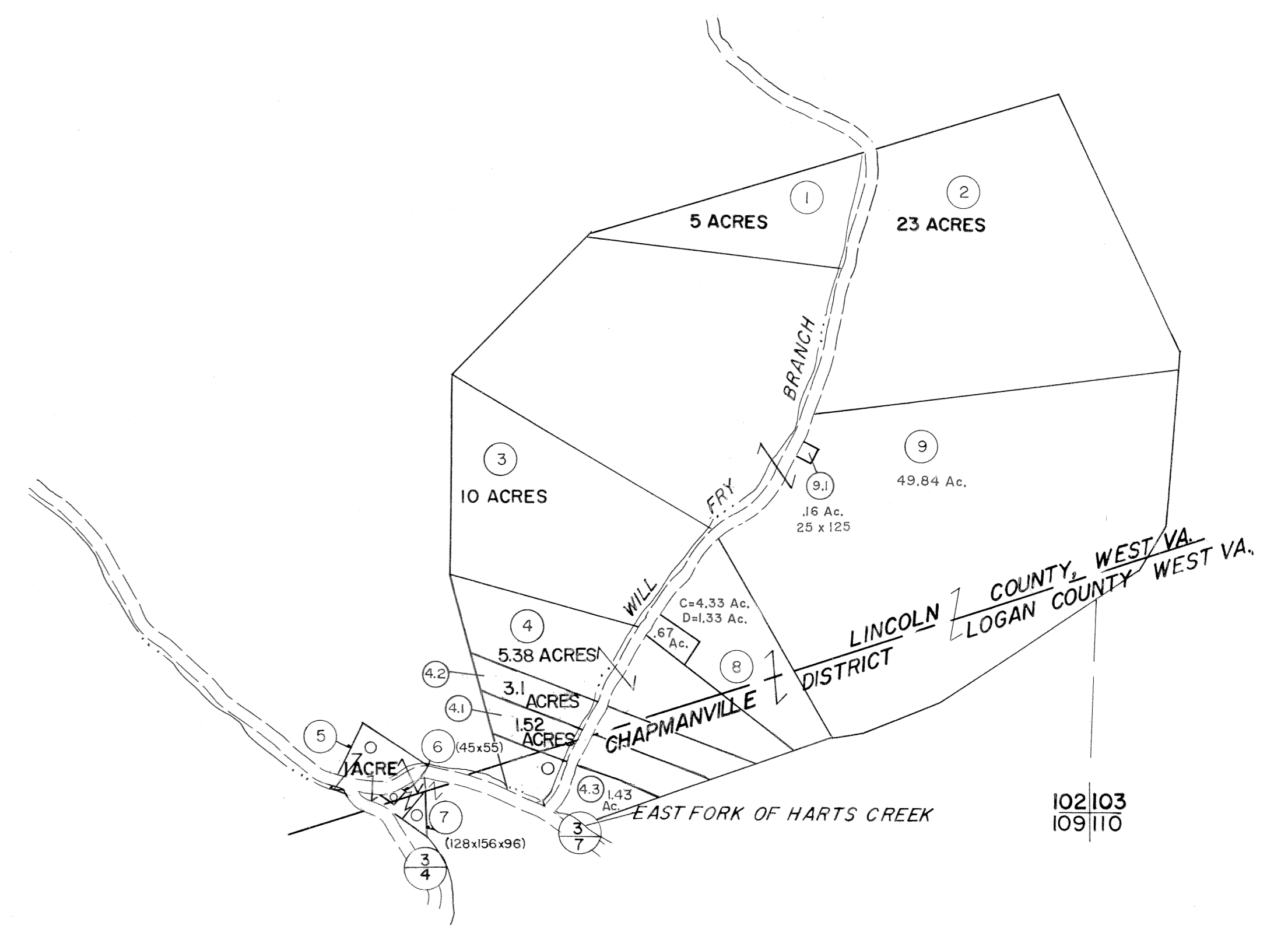
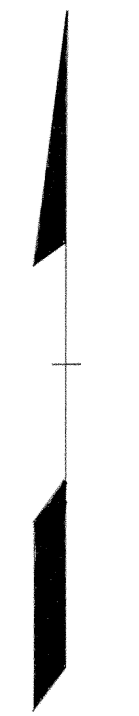


102

102|03



102  
109

**For Tax Purposes Only**

Prepared by  
**MICHAEL BAKER, JR., INC.**  
Consulting Engineers  
Rochester, Pennsylvania

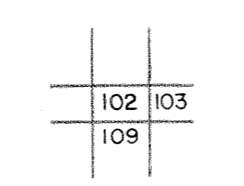
**Legend**

Property line	—————	Original lot line	- - - - -
Edge of pavement or roadway	—————	Deed lot number	(15)
Corporation line	—————	Parcel or index number	(P)
District line	—————	Improvement	o
County line	—————	Railroad	+

**Revisions**

1	4-1-64	9	17
2	REV. TO 1-1-83 NCS	10	18
3	9-1-97 J.E.B	11	19
4	7-1-02 TO 7-1-04 L.S.S	12	20
5		13	21
6		14	22
7		15	23
8		16	24

**KEY MAP**



**LOGAN COUNTY**  
STATE OF WEST VIRGINIA  
Office of Assessor

**DISTRICT**

**GUYAN**

**SHEET NO: 102**

Date, Aerial Photography: November, 1962 Date, Map: April, 1963  
Photo No: Scale: 1" = 400'