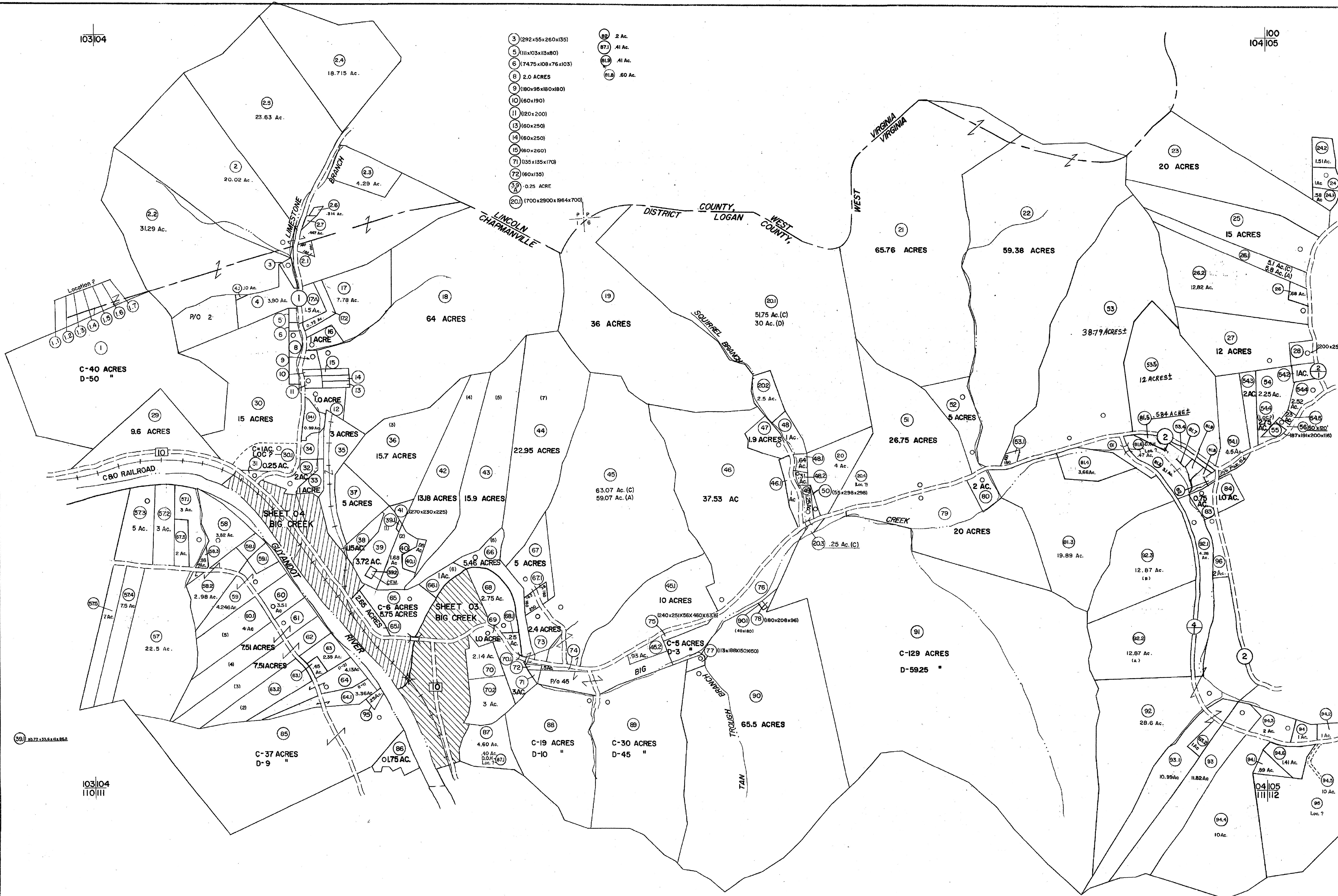


- 3) (292x55x260x135)
- 5) (111x103x134x80)
- 6) (74.75x108x76x103)
- 8) 2.0 ACRES
- 9) (180x95x180x80)
- 10) (60x190)
- 11) (20x200)
- 13) (60x250)
- 14) (60x250)
- 15) (60x260)
- 17) (135x135x170)
- 18) (60x130)
- 19) 0.25 ACRE
- 20) (1700x2900x864x700)
- 21) 2 Ac.
- 22) 41 Ac.
- 23) 41 Ac.
- 24) 60 Ac.



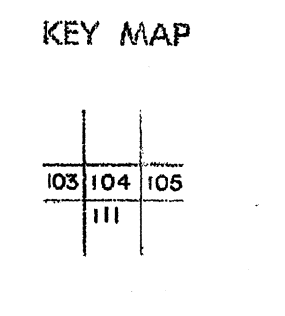
**For Tax Purposes Only**  
 Prepared by  
**MICHAEL BAKER, JR., INC.**  
 Consulting Engineers  
 Rochester, Pennsylvania

**Legend**

Property line	Original lot line
Map of proposed or roadway	Deed lot number
Corporation line	Parcel or index number
District line	Improvement
County line	Railroad

**Revisions**

1	4-1-64	2	7-1-80
2	2-78	12	7-1-82
3	REV. TO 1-1-85	13	4-18-08
4	7-1-85	14	11-1-85
5	REV. TO 7-1-85	15	10-5-87
6	7-1-88	16	7-1-88
7	7-1-88	17	9-1-97
8	9-1-97	18	10-1-97



**LOGAN COUNTY**  
 STATE OF WEST VIRGINIA  
 Office of Assessor

DISTRICT **GUYAN**  
**SHEET NO: 104**  
 Date, Aerial Photography: November, 1962 Date, Map: Ap  
 Photo No: Scale: 1" = 400'