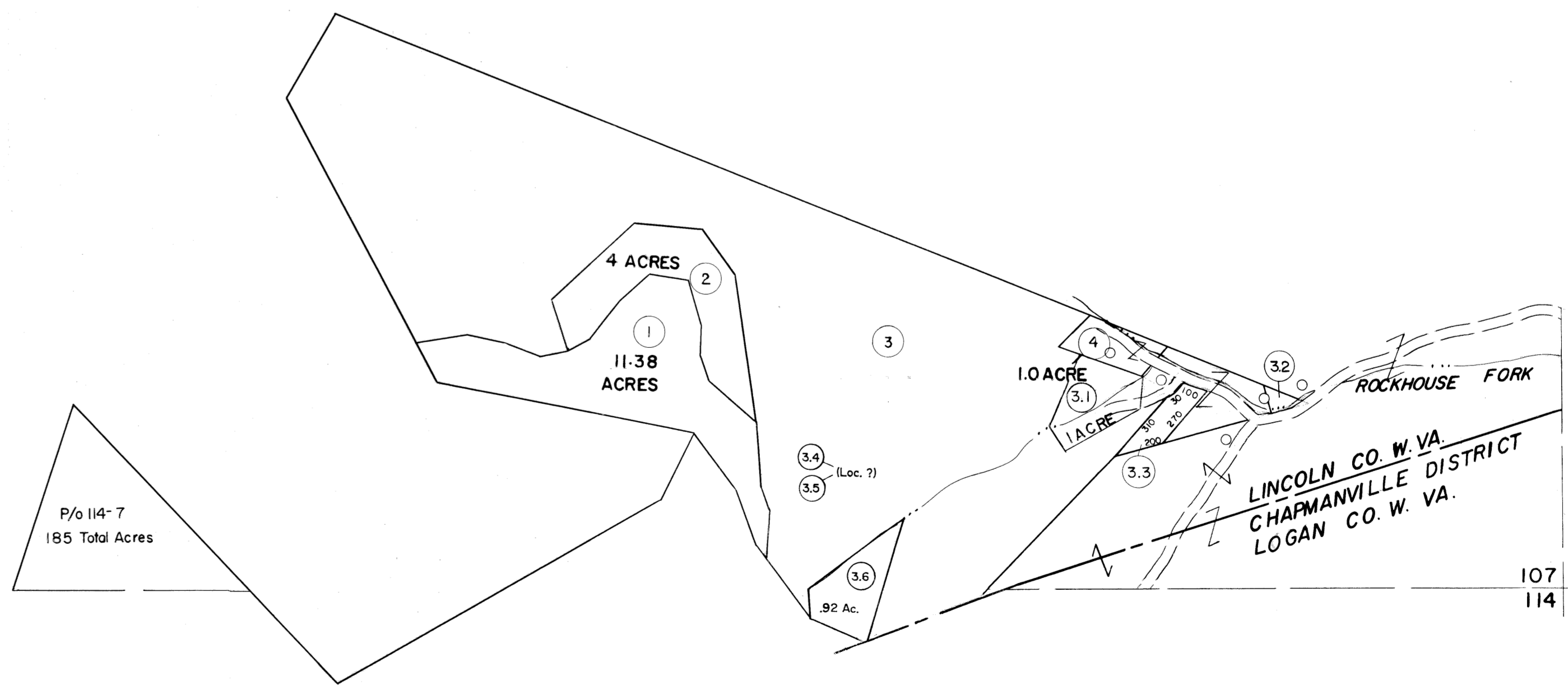


107

107 108

107
114

107 108
114 115



P P
2 14

For Tax Purposes Only

Prepared by
MICHAEL BAKER, JR., INC.
Consulting Engineers
Rochester, Pennsylvania

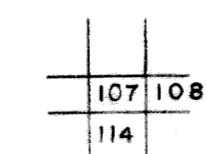
Legend

Property line	—————	Original lot line	-----
Edge of pavement or roadway	=====	Deed lot number	(15)
Corporation line	-----	Parcel or index number	(20)
District line	-----	Improvement	o
County line	-----	Railroad	—+—+—+—

Revisions

1	4-1-64	9	17
2	2-78	P.W.	18
3	REV. TO 1-1-85	NCS	19
4	7-1-85	L.E.S.	20
5	REV TO 7-1-86	NCS	21
6	7-1-2000	J.E.B.	22
7			23
8			24

KEY MAP



LOGAN COUNTY
STATE OF WEST VIRGINIA
Office of Assessor

DISTRICT

GUYAN

SHEET NO: 107

Date, Aerial Photography: November, 1962 Date, Map: April, 1963
Photo No: Scale: 1" = 400'