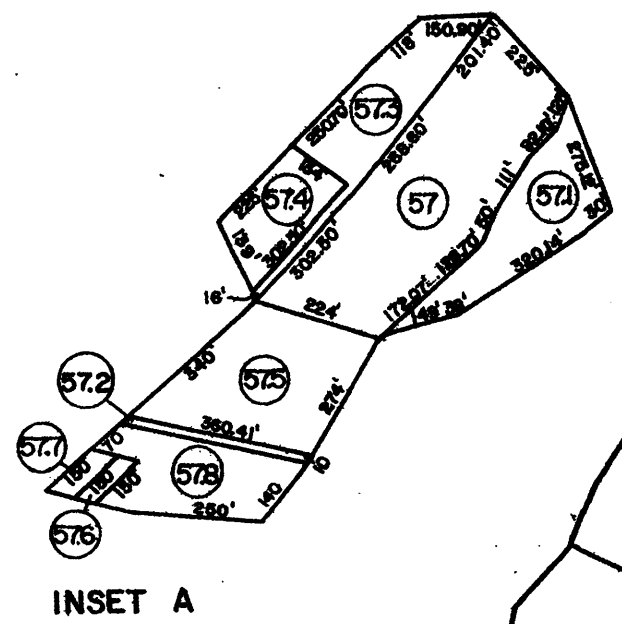
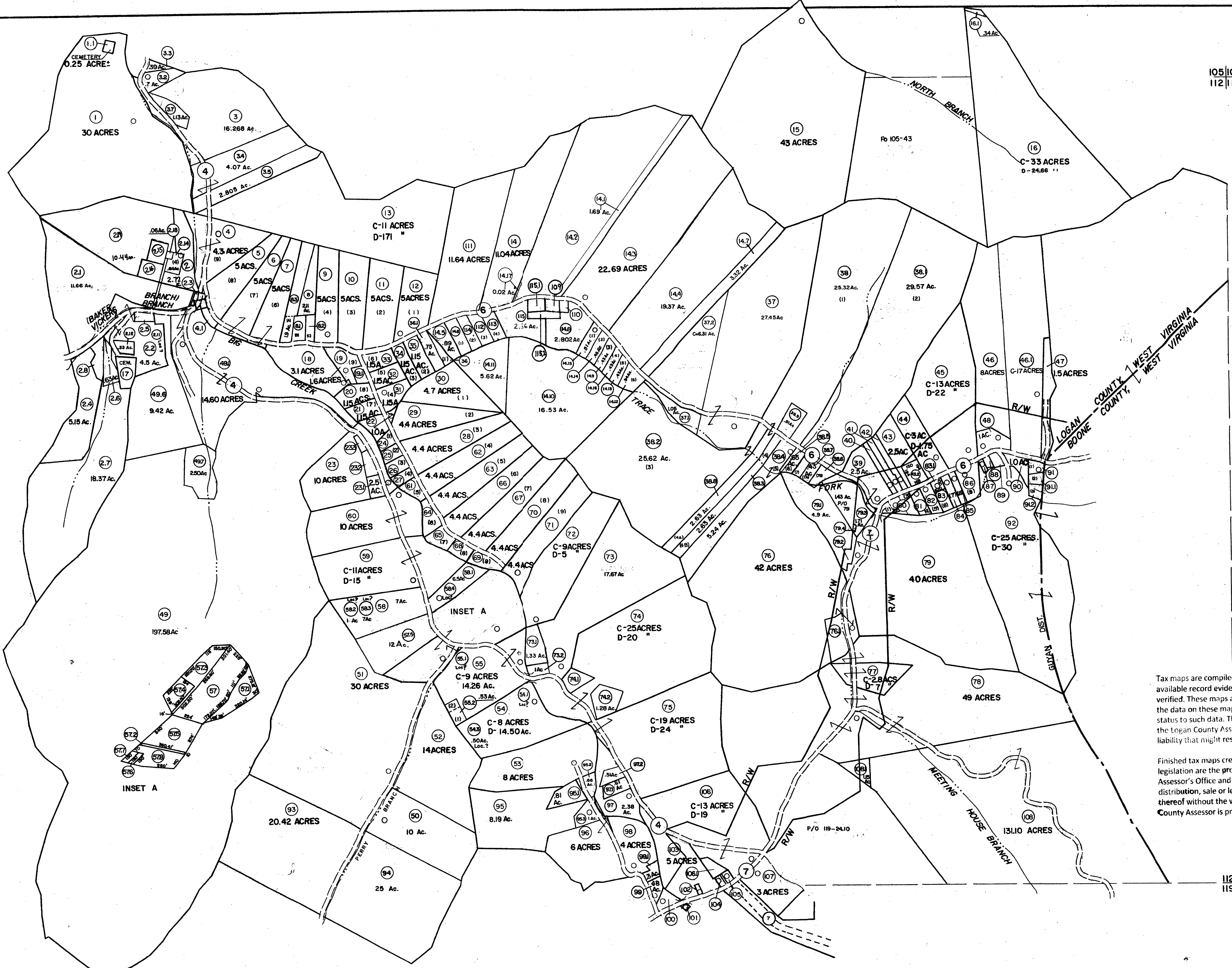


104|105
111|112

105|106
112|113

- 91 .33 Ac.
- 91.1 (85 x 13178 x 53.06 x 68.22 x 1347).33 Ac.
- 91.2 (154.7 x 123.31 x 96.88 x 122.23).33 Ac.
- 17 (189.46 x 89.82 x 103.67 x 92.85 x 280)
- 24 (132 x 165 x 85)
- 25 (144.4 x 180 x 110)
- 26 (114.4 x 95 x 180)
- 27 (100 x 210 x 105)
- 40 (50 x 500 x 50 x 53)
- 41 (50 x 53 x 50 x 352 x 1 x 198)
- 42 (50 x 50 x 352 x 1 x 198)
- 61 (208.5 x 75 x 275 x 210)
- 64 (274.5 x 188 x 334 x 75)
- 65 (174.4 x 135 x 249 x 188)
- 66 (176 x 35 x 220 x 135)
- 69 (286.6 x 35 x 231 x 250)
- 80 (389 x 243 x 350)
- 81 (100 x 269 x 100 x 243)
- 82 (100 x 295 x 100 x 269)
- 83 (100 x 191 x 100 x 185)
- 84 (75 x 287 x 75 x 291)
- 85 (60 x 281 x 60 x 287)
- 86 (225 x 300 x 130 x 281)
- 87 (50 x 120)
- 88 (60 x 112 x 52 x 50)
- 89 (85 x 85 x 43 x 112)
- 90 (250 x 70 x 180 x 210)
- 100 (55.2 x 57 x 56.7 x 34 x 45.5)
- 102 (40 x 100)
- 104 (50 x 100)
- 105 (75 x 100)
- 106 (57 x 200 x 64 x 200)
- 109 (100 x 120)
- 110 (82 x 100 x 60 x 71)
- 41 (145 x 50 x 150 x 93)
- 191 (185 x 164 x 202 x 153.5)
- 222 (35 x 325 x 235 x 236)
- 233 (211 x 102 x 218 x 50)
- 74.1 (125 x 155 x 250 x 225)
- 2.3 .08486 Ac.
- 2.5 .18795 Ac.



Tax maps are compiled for purposes of taxation from available record evidence and have not been field verified. These maps are not valid survey plats and the data on these maps do not imply any official status to such data. The State of West Virginia and the Logan County Assessor's Office assume no liability that might result from the use of these maps.

Finished tax maps created under the provisions of legislation are the property of The Logan County Assessor's Office and the reproduction, copying, distribution, sale or lease of such tax maps or copies thereof without the written permission of the Logan County Assessor is prohibited by law.

112|113
119|120

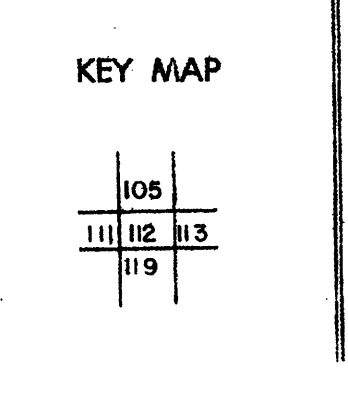
For Tax Purposes Only
Prepared by
MICHAEL BAKER, JR., INC.
Consulting Engineers
Rochester, Pennsylvania

Legend

Property line	—	Original lot line	— (15)
Edge of pavement or roadway	—	Deed lot number	— (19)
Corporation line	—	Parcel or index number	—
District line	—	Railroad	—
County line	—		

Revisions

1	4-1-64	9	7-1-02 TO 7-1-04 L&S	17
2	2-78	10	4-15-08	18
3	REV. TO 1-1-83	11	3/5/10	19
4	7-1-85	12	11-7-2	20
5	7-1-88	13	2-23-13	21
6	7-1-88	14	2/25/15	22
7	9-1-97	15	11-16	23
8	7-1-2000	16		24



LOGAN COUNTY
STATE OF WEST VIRGINIA
Office of Assessor

DISTRICT
GUYAN
SHEET NO:112
Date, Aerial Photography: November, 1962 Date, Map: April, 1963
Photo No: Scale: 1" = 400'