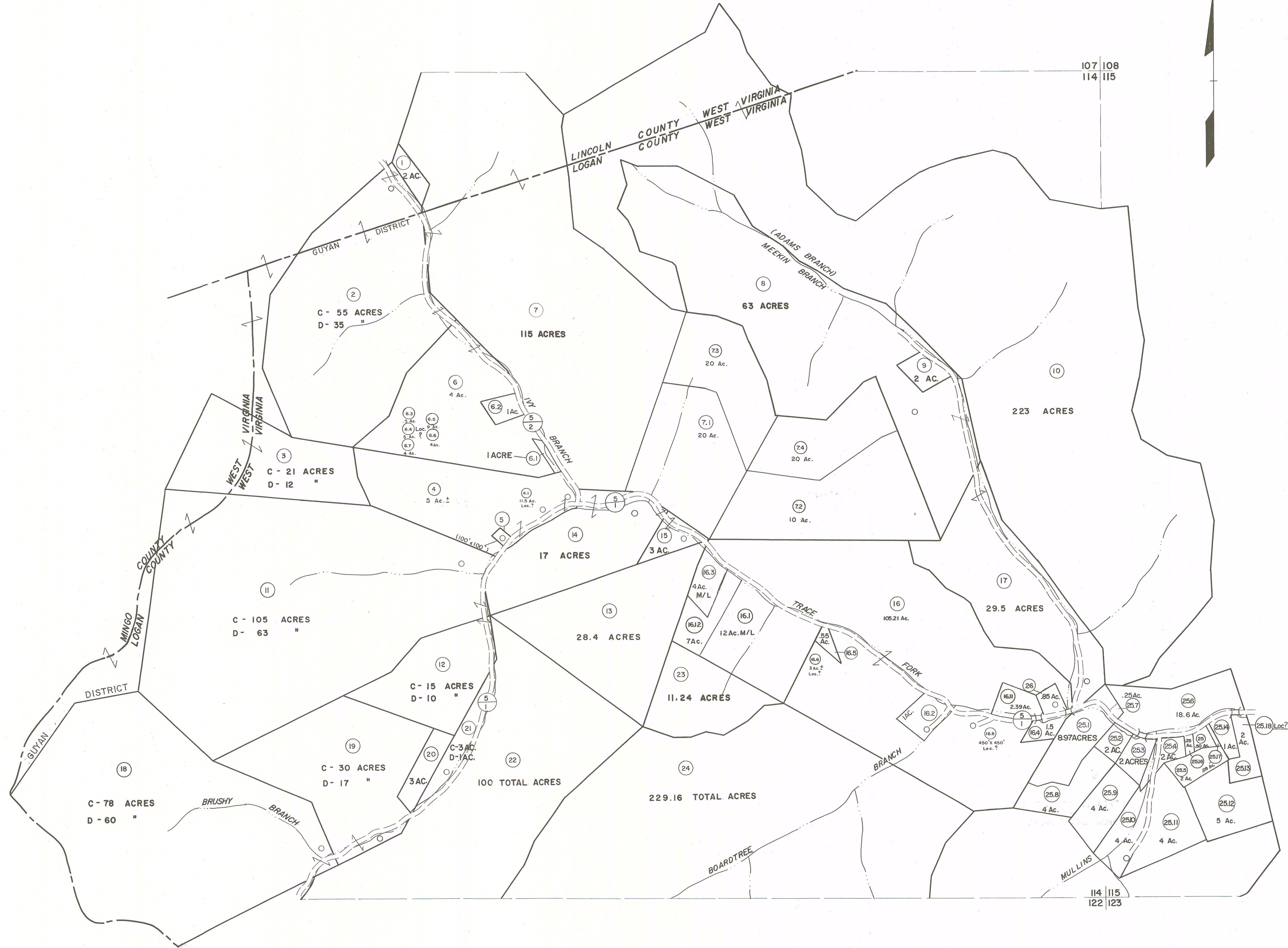


107
114

107 108
114 115

114
122

114 115
122 123



For Tax Purposes Only

Prepared by
MICHAEL BAKER, JR., INC.
Consulting Engineers
Rochester, Pennsylvania

Legend	
Property line	———
Edge of pavement or roadway	———
Corporation line	———
District line	———
County line	———
Original lot line	———
Deed lot number	(15)
Parcel or index number	(19)
Improvement	○
Railroad	—+—

Revisions			
1	4-1-64	9	7-14-11
2	REV TO 1-1-83	NCS	8/4/13
3	REV TO 7-1-83	MEN	3/26/16
4	REV TO 7-1-86	NCS	
5	7-1-88	TRL	
6	9-1-97	J.E.B	
7	7-1-02 TO 7-1-04	L.S.S	

KEY MAP

LOGAN COUNTY
STATE OF WEST VIRGINIA
Office of Assessor

DISTRICT

GUYAN

SHEET NO: 114

Date, Aerial Photography: November, 1962 Date, Map: April, 1963
Photo No: Scale: 1" = 400'