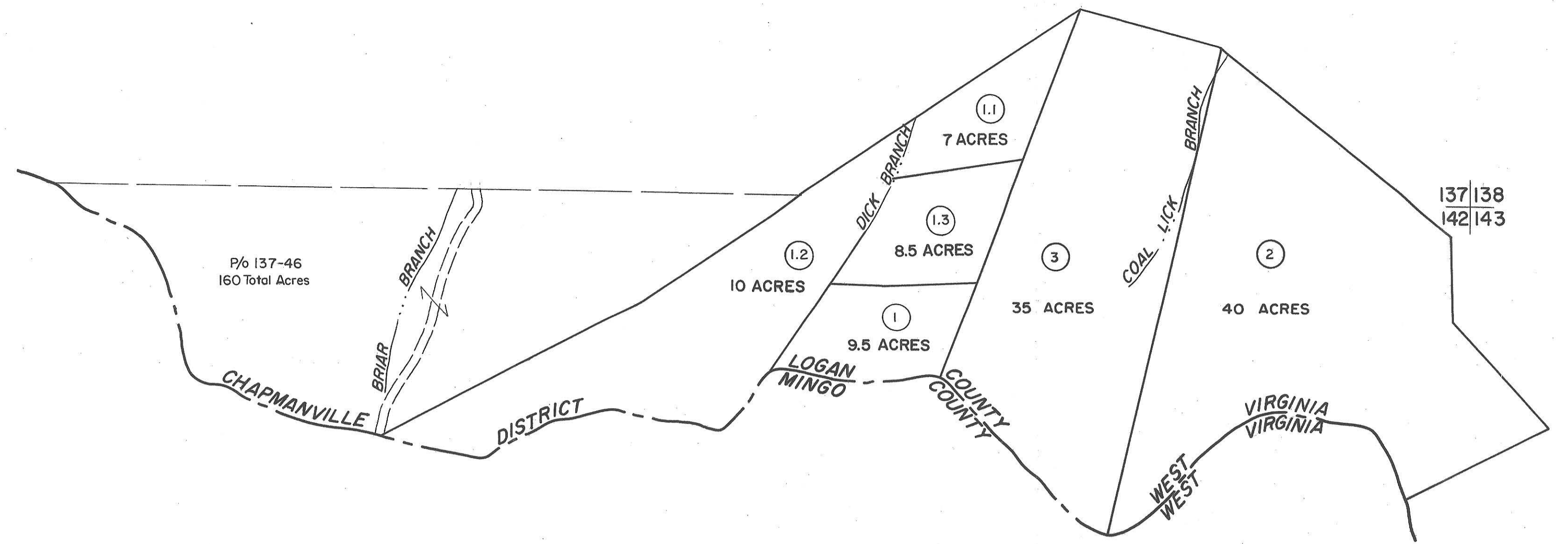


137
142



137|138
142|143

142

142|143

For Tax Purposes Only

Prepared by
MICHAEL BAKER, JR., INC.
Consulting Engineers
Rochester, Pennsylvania

Legend

Property line	—————	Original lot line	-----
Edge of pavement or roadway	-----	Deed lot number	(15)
Corporation line	-----	Parcel or index number	○
District line	-----	Improvement	○
County line	-----	Railroad	—+—+—+—

Revisions

1	4-1-64	9	17
2	Assessing 1983	10	18
3	REV. TO 7-1-88	NCS	11
4	2/25/15	SBH	12
5		13	21
6		14	22
7		15	23
8		16	24

KEY MAP



LOGAN COUNTY
STATE OF WEST VIRGINIA
Office of Assessor

DISTRICT

GUYAN

SHEET NO:142

Date, Aerial Photography: November, 1962 Date, Map: April, 1963
Photo No: Scale: 1"=400'