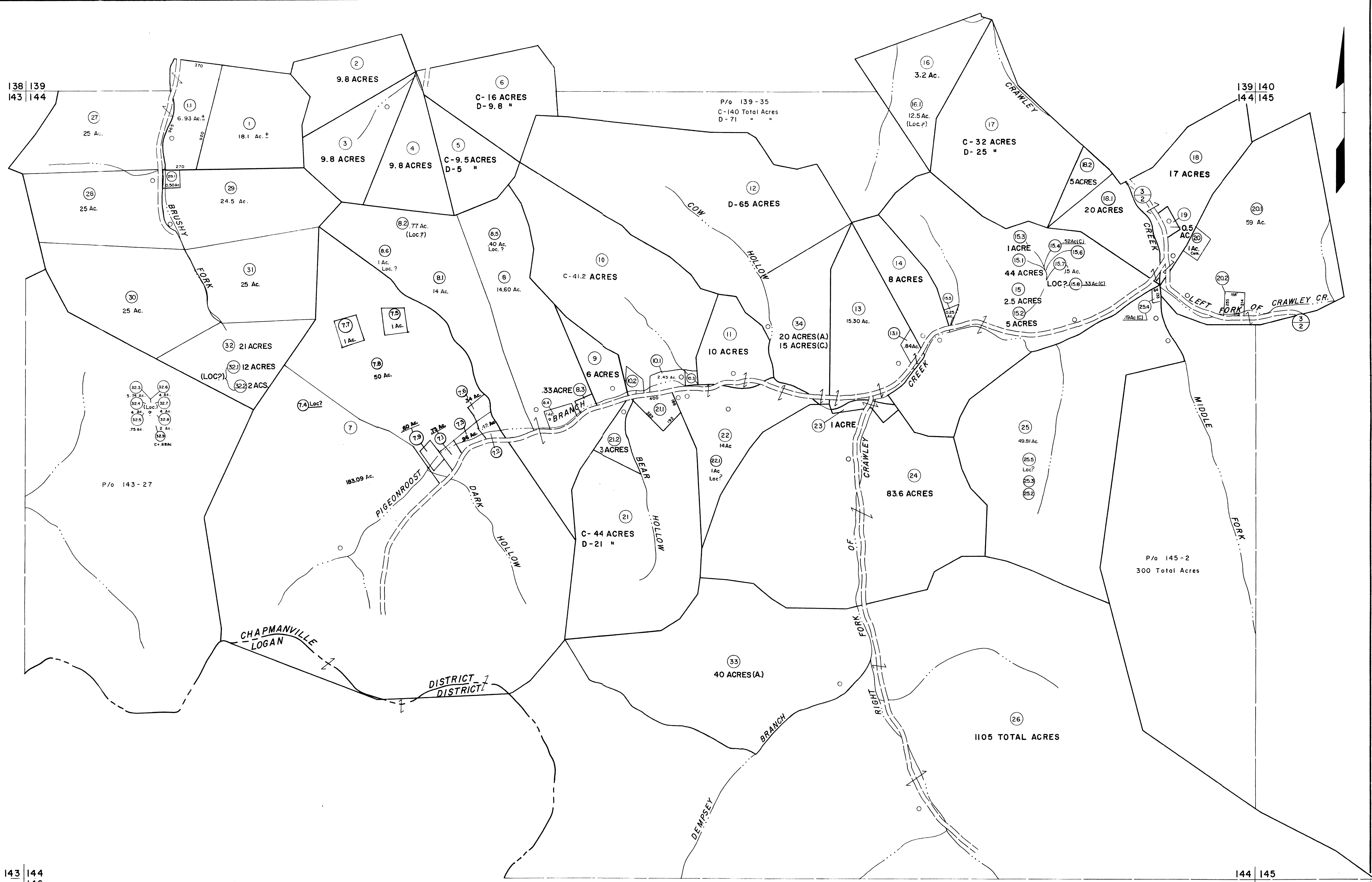


138 | 139
143 | 144

139 | 140
144 | 145

143 | 144
146 | 147

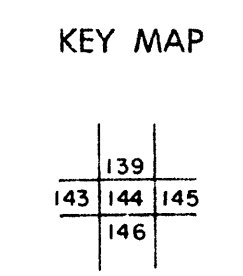
144 | 145
146 | 147



For Tax Purposes Only
 Prepared by
MICHAEL BAKER, JR., INC.
 Consulting Engineers
 Rochester, Pennsylvania

Legend	
Property line	—
Edge of pavement or roadway	—
Corporation line	—
District line	---
County line	---
Original lot line	---
Deed lot number	(15)
Parcel or index number	(20)
Improvement	○
Railroad	—

Revisions	
1 4-1-64	9 7-1-02 TO 7-1-04 L.S.S.
2 2-78	10 4-15-08 H.S.
3 11-6-08	11 11-6-08 H.S.
4 2/27/10	12 2/27/10 S.B.H.
5 REV. TO 7-1-88	13 11-8-12 H.S.
6 REV. TO 7-1-86	14 NCS
7 REV. TO 7-1-88	15 NCS
8 P. 1-97	16 J.E.B.



LOGAN COUNTY
 STATE OF WEST VIRGINIA
 Office of Assessor

DISTRICT **GUYAN**
SHEET NO: 144
 Date, Aerial Photography: November, 1962 Date, Map: April, 1963
 Photo No: Scale: 1" = 400'