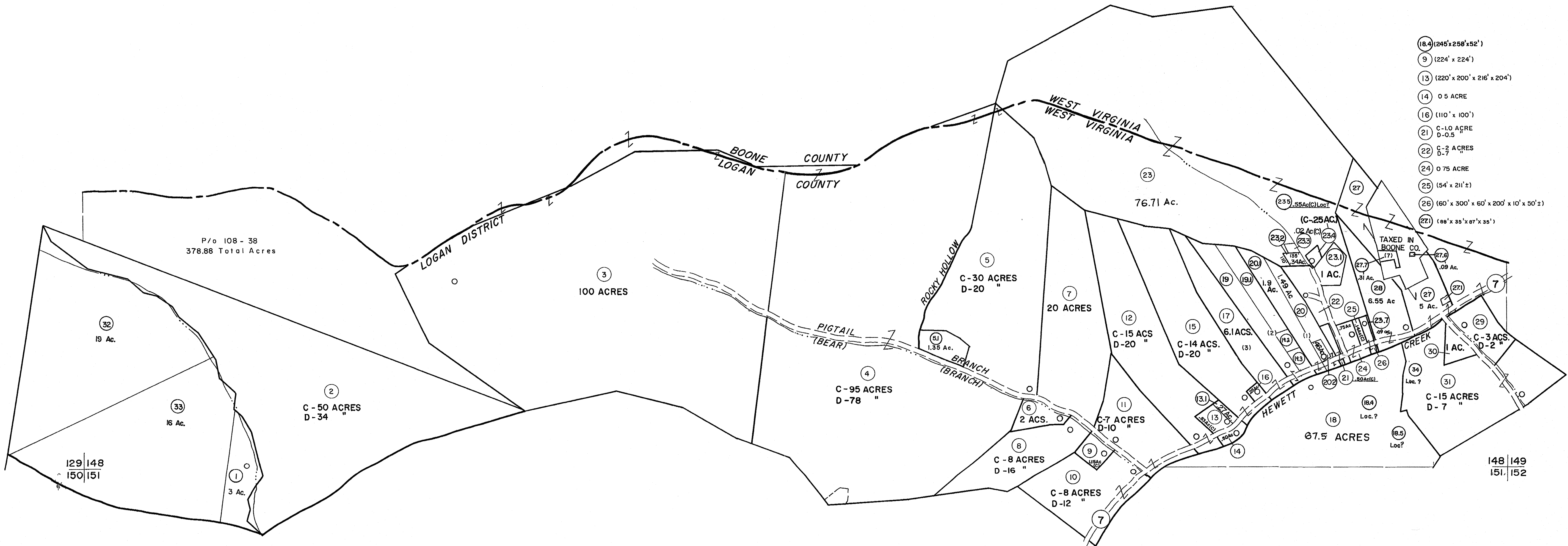
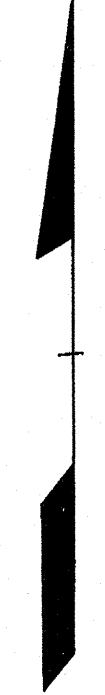


This map may be a copy of the Assessor's office record and the reproduction of any copies thereof without the prior permission of the County Assessor is prohibited.



- (18-9) (245' x 258' x 52')
- 9 (224' x 224')
- 13 (220' x 200' x 216' x 204')
- 14 0.5 ACRE
- 16 (110' x 100')
- 21 C-10 ACRES D-0.5
- 22 C-2 ACRES D-7
- 24 0.75 ACRE
- 25 (54' x 21' ±)
- 26 (60' x 300' x 60' x 200' x 10' x 50' ±)
- 27 (88' x 35' x 87' x 35')

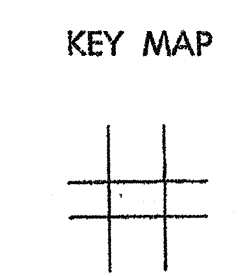
For Tax Purposes Only
Prepared by
MICHAEL BAKER, JR., INC.
Consulting Engineers
Rochester, Pennsylvania

Legend

Property line	-----	Original lot line	-----
Edge of pavement or roadway	-----	Deed lot number	(15)
Corporation line	-----	Parcel or index number	(20)
District line	-----	Improvement	o
County line	-----	Railroad	+

Revisions

1	4-1-64	9	4-15-08	HHS	17
2	2-10-78	10	2/27/10	SBH	18
3	January, 1983	11	7-14-11	THS	19
4	To JULY 1, 1983 C.P.	12	12-2016		20
5	Revised to 7-1-87	13			21
6	REV TO 7-1-88	14			22
7	9-1-97	15			23
8	7-1-02 TO 7-1-04 L.S.S.	16			24



LOGAN COUNTY
STATE OF WEST VIRGINIA
Office of Assessor

DISTRICT **GUYAN**
SHEET NO: 148
Date, Aerial Photography: November, 1962 Date, Map: April, 1963
Photo No: Scale: 1" = 400'