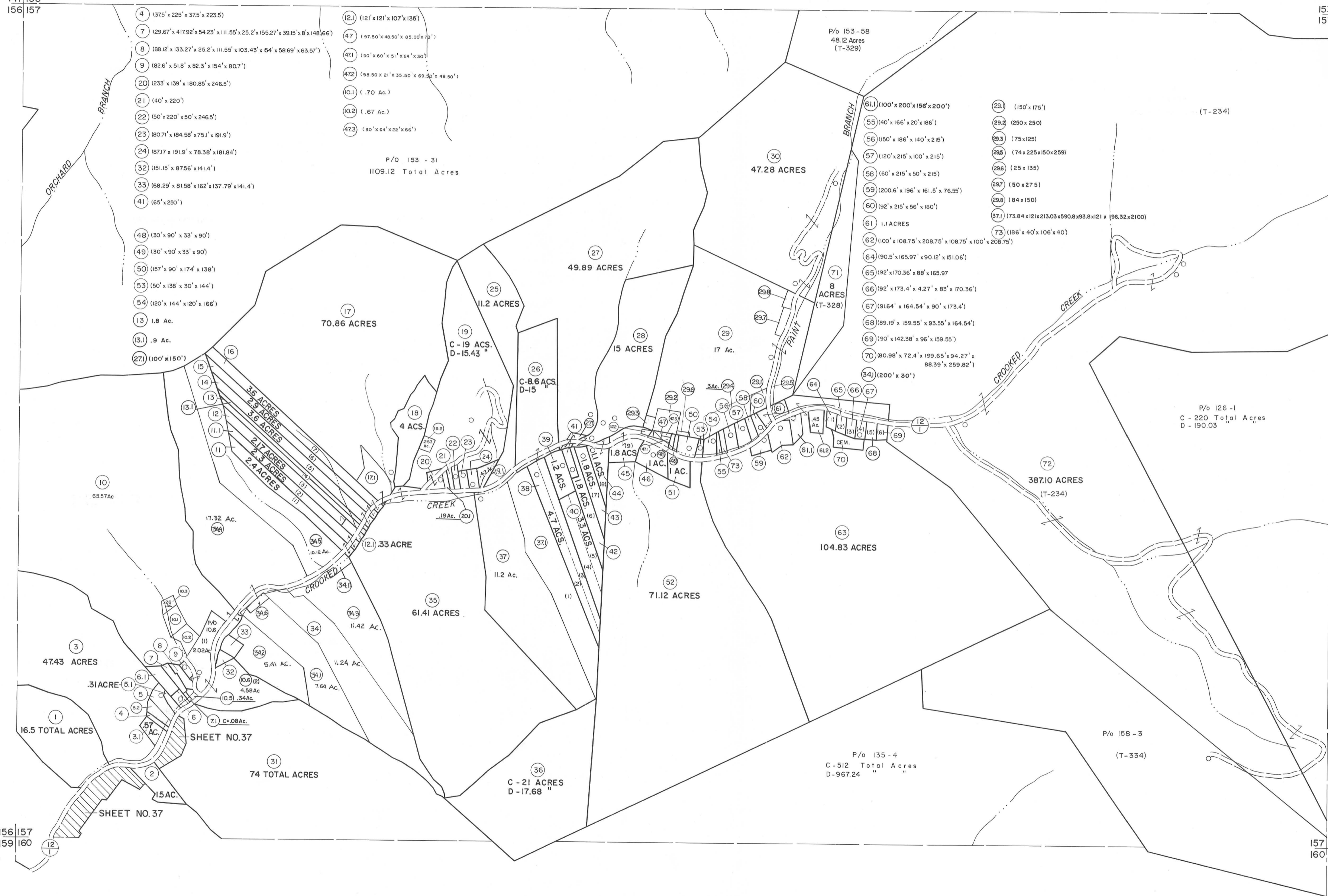


141 153  
156 157

153 154  
157 158



For Tax Purposes Only

Prepared by  
MICHAEL BAKER, JR., INC.  
Consulting Engineers  
Rochester, Pennsylvania

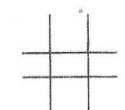
Legend

Property line	— — — — —	Original lot line	— · — · — · —
Edge of pavement or roadway	— — — — —	Deed lot number	(15)
Corporation line	— — — — —	Parcel or index number	(99)
District line	— — — — —	Improvement	o
County line	— — — — —	Railroad	— + — + —

Revisions

1	4-1-64	9	11-7-12	H+S	17
2	REV TO 7-1-83	10			18
3	REV TO 7-1-83	11		NCS	19
4	REV TO 7-1-84	12			20
5	REV TO 7-1-88	13		NCS	21
6	9-1-97	14		J.E.B	22
7	7-1-02 TO 7-1-04 L.S.S.	15			23
8	2/27/10	16		S&H	24

KEY MAP



LOGAN COUNTY  
STATE OF WEST VIRGINIA  
Office of Assessor

DISTRICT

GUYAN

SHEET NO: 157

Date, Aerial Photography: November, 1962 Date, Map: April, 1963  
Photo No: Scale: 1" = 400'