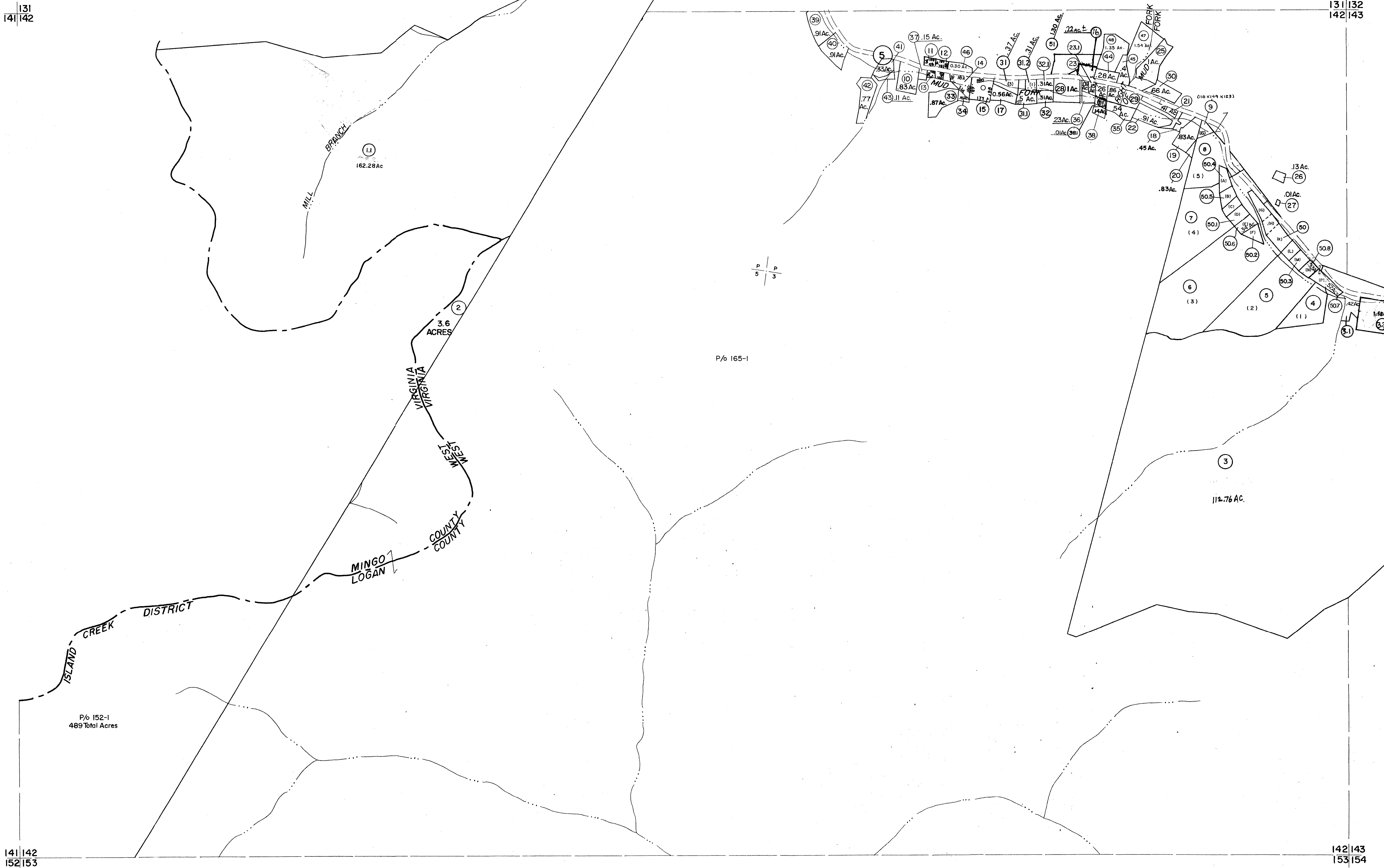


(20) 5796 x 120.9 x 89.76)  
 (23) 123.8 x 112.69 x 119.46 x 80.74)  
 (24) 57.82 x 57.51 x 135.74 x 95.2 x 112.69)



For Tax Purposes Only  
 Prepared by  
**MICHAEL BAKER, JR., INC.**  
 Consulting Engineers  
 Rochester, Pennsylvania

| Legend                      |                        |
|-----------------------------|------------------------|
| Property line               | Original lot line      |
| Edge of pavement or roadway | Dead lot number        |
| Cooperation line            | Parcel or index number |
| District line               | Improvement            |
| County line                 | Railroad               |

| Revisions     |          |
|---------------|----------|
| 1 4-1-64      | 2 11-16  |
| 2 6-1-64      | 10 10-17 |
| 3 7-1-84 C.P. |          |
| 4 7-1-89      | TRJ      |
| 5 9-1-97      | J.E.B    |
| 6 7-1-2000    | J.E.B    |
| 7 4-15-06     | NKS      |
| 8 2/21/10     | SBH      |

KEY MAP

**LOGAN COUNTY**  
 STATE OF WEST VIRGINIA  
 Office of Assessor

DISTRICT  
**ISLAND CREEK**  
 SHEET NO: 142  
 Date: Aerial Photography: November 1962 Date: Map: April  
 Photo No: Scale: 1" = 400'