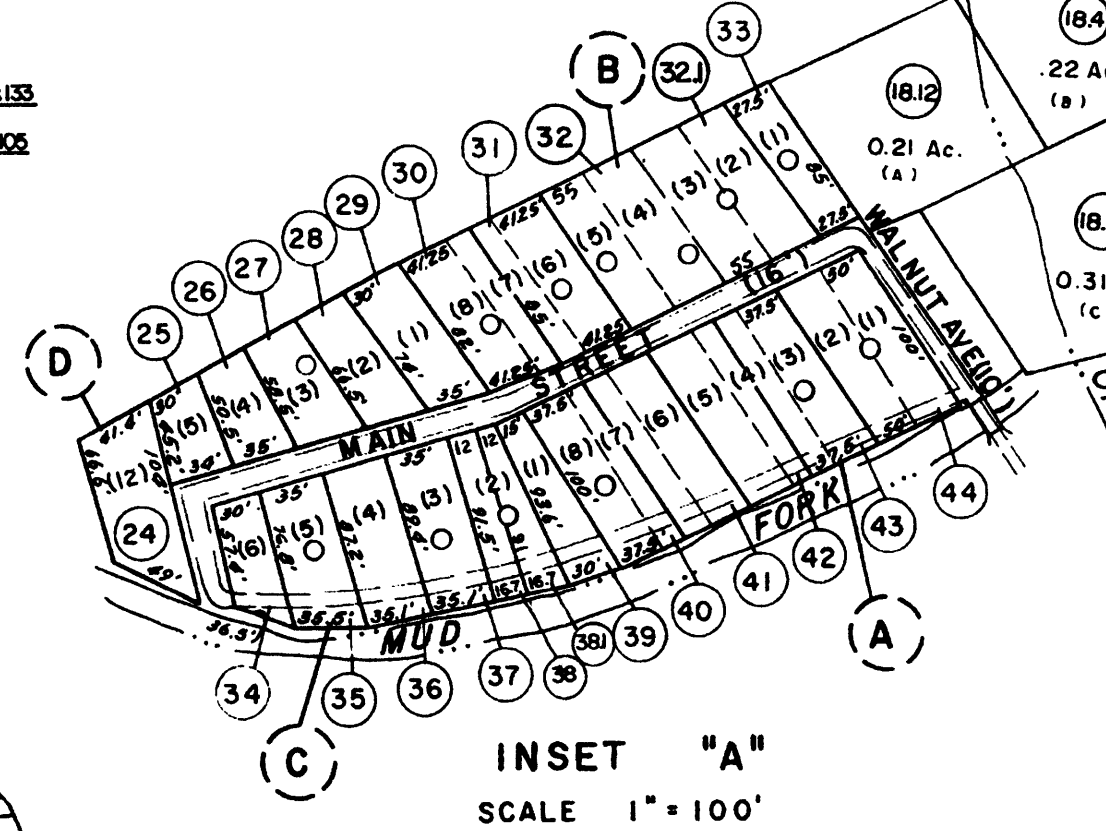
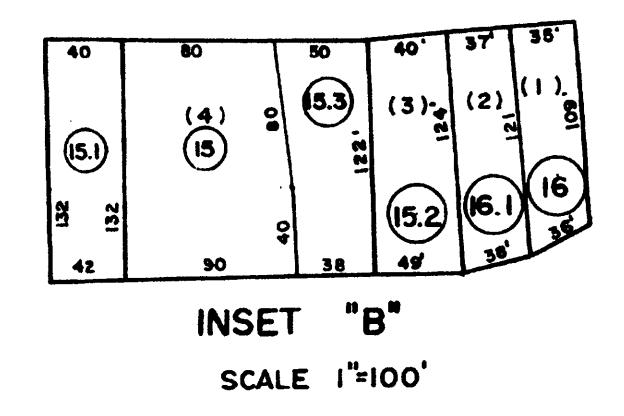


- 3 (150' x 200')
- 4 (55' x 95' x 40' x 80')
- 5 (15' x 130' x 32' x 130')
- 6 (72' x 133' x 55' x 130')
- 7 (19' x 133')
- 8 (73' x 116' x 79' x 116')
- 13 (200' x 160' x 197' x 160')
- 14 (67' x 160')
- 15 (165' x 100' x 60' x 50' x 105' x 150')
- 16 (122.7' x 137' x 65' x 150')
- 17 (206' x 105')
- 19 (60' x 80' x 80' x 22')



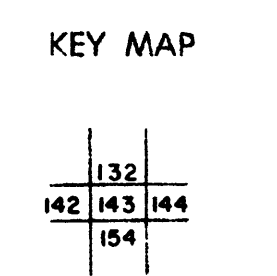
For Tax Purposes Only
 Prepared by
MICHAEL BAKER, JR., INC.
 Consulting Engineers
 Rochester, Pennsylvania

Legend

Property line	—	Original lot line	- - - - -
Edge of pavement or roadway	— · — · —	Dead lot number	(15)
Corporation line	— · — · — · —	Parcel or index number	(19)
District line	- - - - -	Improvement	○
County line	- - - - -	Railroad	— + — + —

Revisions

1	4-1-64	2	7-1-2000 J.E.B	17
2	2-3-78 KJG	10	11-6-08 H+H	18
3	Revised to 7-1-88	11	7-1-11 H+H	19
4	Amended 12-1-88	12	11-7-12 H+H	20
5	To 7-1-86 C.P.	13	10-17 CM	21
6	7-1-88 TRL	14		22
7	0615 5-7-91 TL	15		23
8	9-1-97 J.E.B	16		24



LOGAN COUNTY
 STATE OF WEST VIRGINIA
 Office of Assessor

DISTRICT
ISLAND CREEK
SHEET NO: 143
 Date, Aerial Photography: November, 1962 Date, Map: April,
 Photo No: Scale: 1"=400'