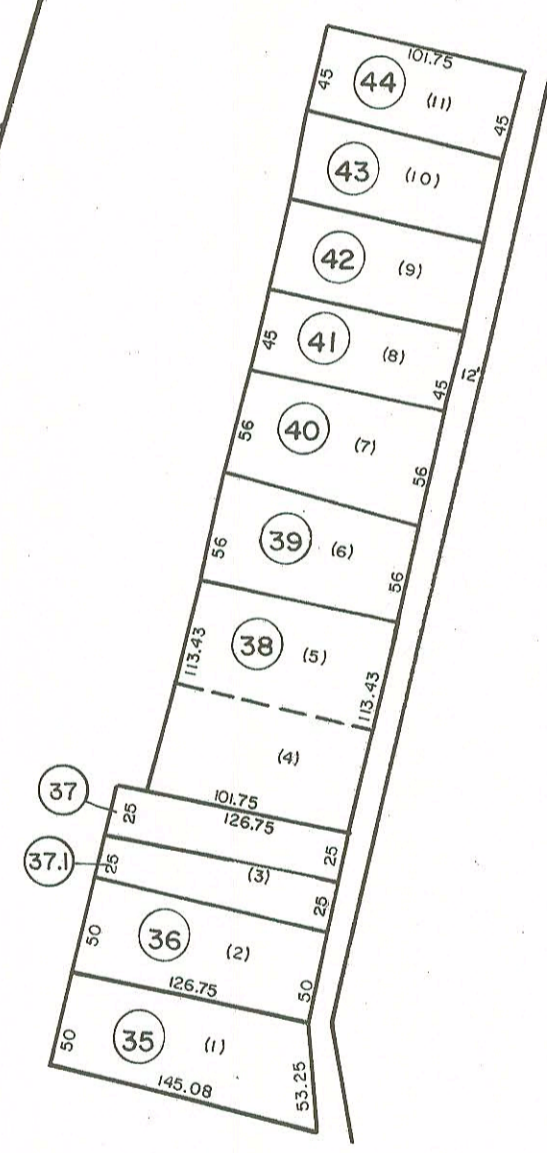


- (32) (82x150x90x150)
- (45) (75x100.46)
- (46) (30.90x22.49x63.98x122.44x109.04x100.46)
- (47) (56.82x34.07x127.77x62.20x122.44)
- (48) (54.70x24.11x132.89x59.09x127.77)
- (49) (72x132.89)
- (50) (78x61.43x86.85x119.54x132.89)
- (51) (40x120.11x65.06x26.16x200.80x130x86.85)



INSET "B"  
1" = 100'

**For Tax Purposes Only**  
 Prepared by  
**MICHAEL BAKER, JR., INC.**  
 Consulting Engineers  
 Rochester, Pennsylvania

Legend	
Property line	Original lot line
Edge of pavement or roadway	Deed lot number
Corporation line	Parcel or index number
District line	Improvement
County line	Railroad

Revisions				
1	4-1-64	9	9/2/07	S&H
2	4-3-78	10	7-14-11	H&S
3	Revised to 7-1-83	11	2-23-13	J&S
4	July, 1986	12	3/27/16	S&H
5	7-1-88	13		
6	0615 5-10-91	14		
7	9-1-97	15		
8	7-1-2000	16		

KEY MAP

**LOGAN COUNTY**  
 STATE OF WEST VIRGINIA  
 Office of Assessor

DISTRICT  
**ISLAND CREEK**  
 SHEET NO: 155  
 Date, Aerial Photography: November, 1962 Date, Map: April, 1963  
 Photo No: Scale: 1" = 400'