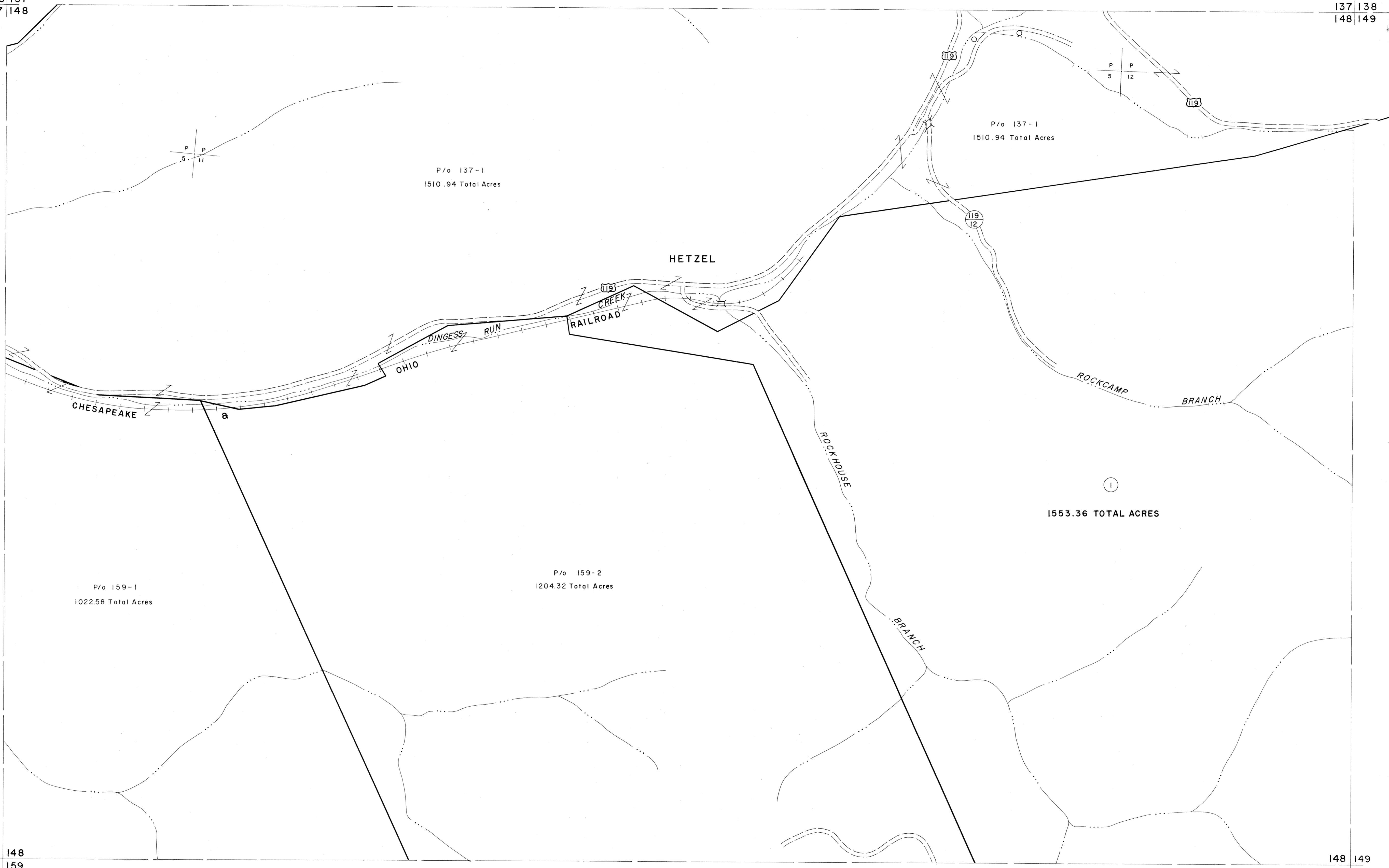


136 137  
147 148

137 138  
148 149



147 148  
158 159

148 149  
159 160

For Tax Purposes Only

Prepared by  
MICHAEL BAKER, JR., INC.  
Consulting Engineers  
Rochester, Pennsylvania

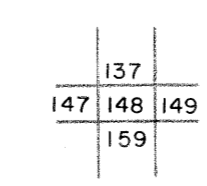
Legend

Property line	—	Original lot line	- - - -
Edge of pavement or roadway	—	Deed lot number	(15)
Corporation line	- - - -	Parcel or index number	(16)
District line	- - - -	Improvement	o
County line	- - - -	Railroad	—

Revisions

1	4-1-64	9		17	
2	TO JULY 1981 C.P.	10		18	
3		11		19	
4		12		20	
5		13		21	
6		14		22	
7		15		23	
8		16		24	

KEY MAP



LOGAN COUNTY  
STATE OF WEST VIRGINIA  
Office of Assessor

DISTRICT

LOGAN

SHEET NO: 148

Date, Aerial Photography: November, 1962 Date, Map: April, 1963  
Photo No: Scale: 1" = 400'