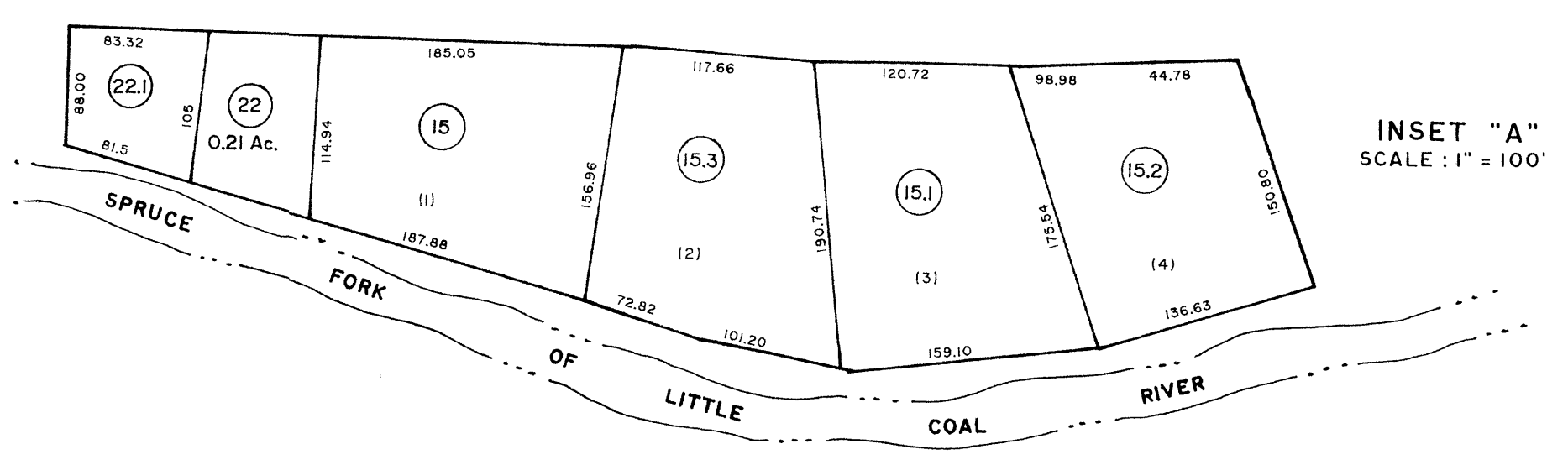
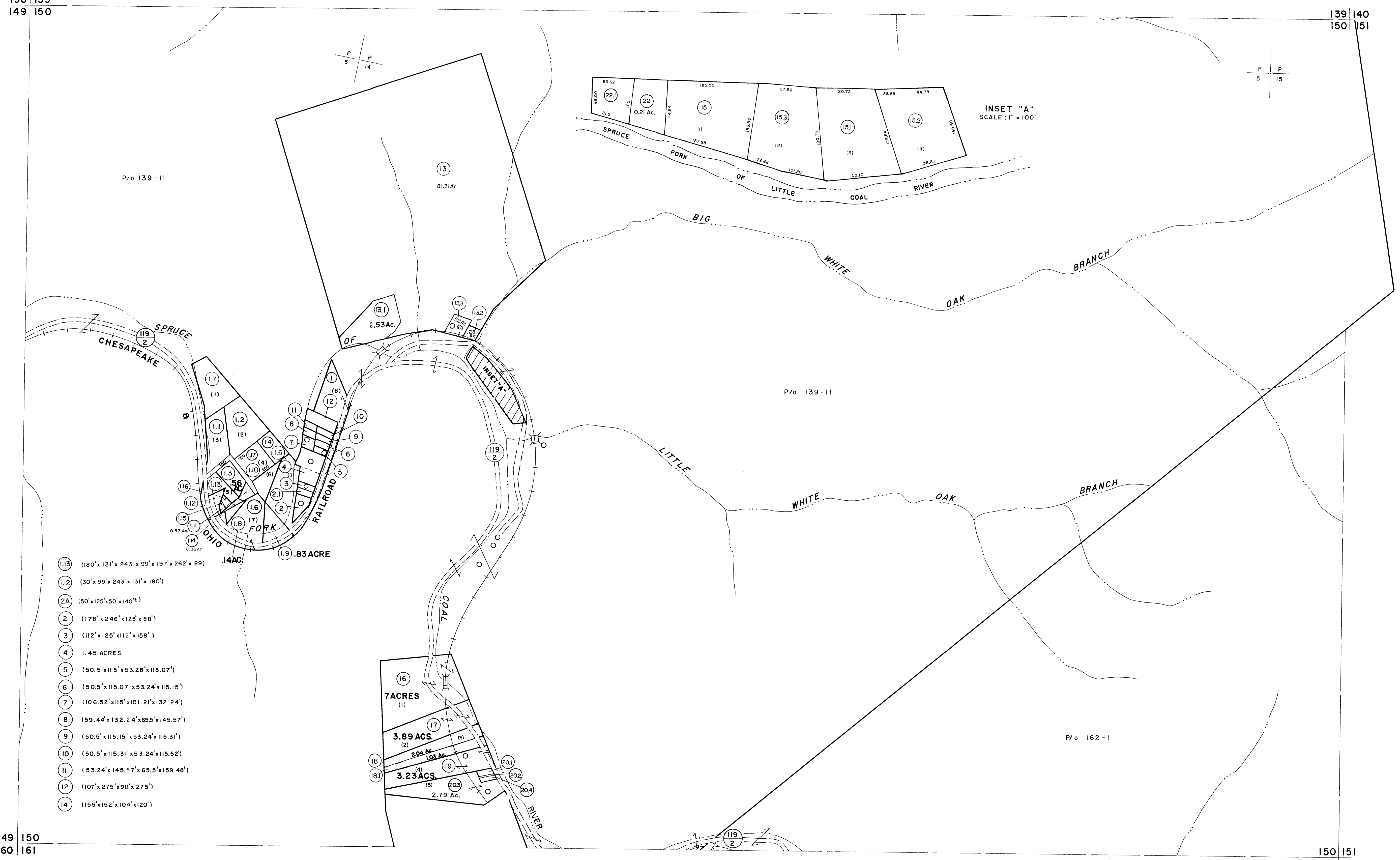


138 | 139
149 | 150

139 | 140
150 | 151

149 | 150
160 | 161

150 | 151
161 | 162

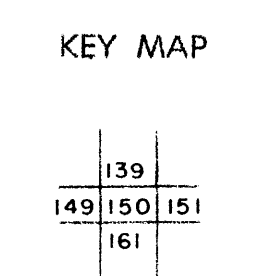


- (1) 180' x 131' x 243' x 99' x 197' x 262' x 89' .14 AC.
- (2) 30' x 99' x 243' x 131' x 180'
- (2A) 150' x 125' x 50' x 140'
- (3) 178' x 246' x 125' x 88'
- (4) 112' x 125' x 112' x 158'
- (5) 1.45 ACRES
- (6) 50.5' x 115' x 53.28' x 115.07'
- (7) 50.5' x 115.07' x 53.24' x 115.15'
- (8) 106.52' x 115' x 101.21' x 132.24'
- (9) 59.44' x 132.24' x 65.5' x 145.57'
- (10) 50.5' x 115.15' x 53.24' x 115.31'
- (11) 50.5' x 115.31' x 53.24' x 115.52'
- (12) 53.24' x 145.57' x 65.5' x 159.48'
- (13) 107' x 275' x 98' x 275'
- (14) 155' x 152' x 104' x 120'

For Tax Purposes Only
 Prepared by
MICHAEL BAKER, JR., INC.
 Consulting Engineers
 Rochester, Pennsylvania

Legend	
Property line	Original lot line
Edge of pavement or roadway	Deed lot number
Corporation line	Parcel or index number
District line	Improvement
County line	Railroad

Revisions	
1 4-1-64	9 6-2-2003 JEP
2 2-2-78 BAH	10 11-6-08 H+S
3 TO JULY 1981 C.P.P.	11
4 TO 7-1-86 C.P.P.	12
5 REV. TO 7-1-88 NCS	13
6 8-1-97 J.E.B.	14
7 7-1-2000 JEB	15
	16



LOGAN COUNTY
 STATE OF WEST VIRGINIA
 Office of Assessor

DISTRICT **LOGAN**
 SHEET NO: 150
 Date, Aerial Photography: November, 1962 Date, Map: April, 1963
 Photo No: Scale: 1" = 400'