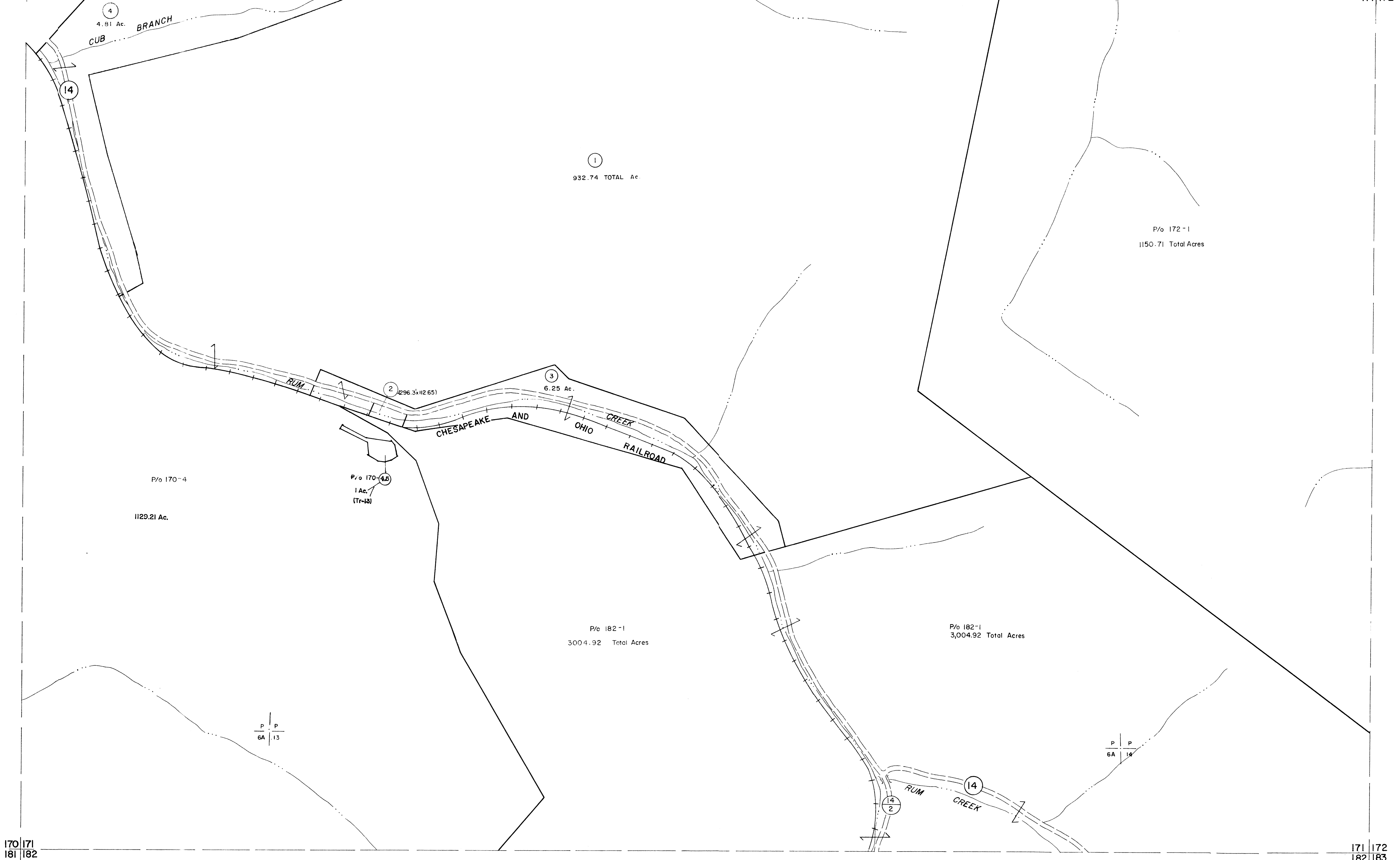


159 | 160  
170 | 171

160 | 161  
171 | 172

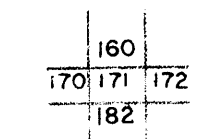


For Tax Purposes Only  
 Prepared by  
**MICHAEL BAKER, JR., INC.**  
 Consulting Engineers  
 Rochester, Pennsylvania

Legend	
Property line	—
Edge of pavement or roadway	- - - -
Corporation line	- · - · -
District line	- - - -
County line	- - - -
Original lot line	(15)
Deed lot number	(13)
Parcel or index number	(14)
Improvement	(12)
Railroad	(11)

Revisions			
1	4-1-64	9	17
2	To JULY 1981 C.P.	10	18
3	8-1-97 J.E.B.	11	19
4		12	20
5		13	21
6		14	22
7		15	23
8		16	24

KEY MAP



**LOGAN COUNTY**  
 STATE OF WEST VIRGINIA  
 Office of Assessor

DISTRICT

**LOGAN**

**SHEET NO: 171**

Date, Aerial Photography: November, 1962 Date, Map: April, 1963  
 Photo No: Scale: 1" = 400'