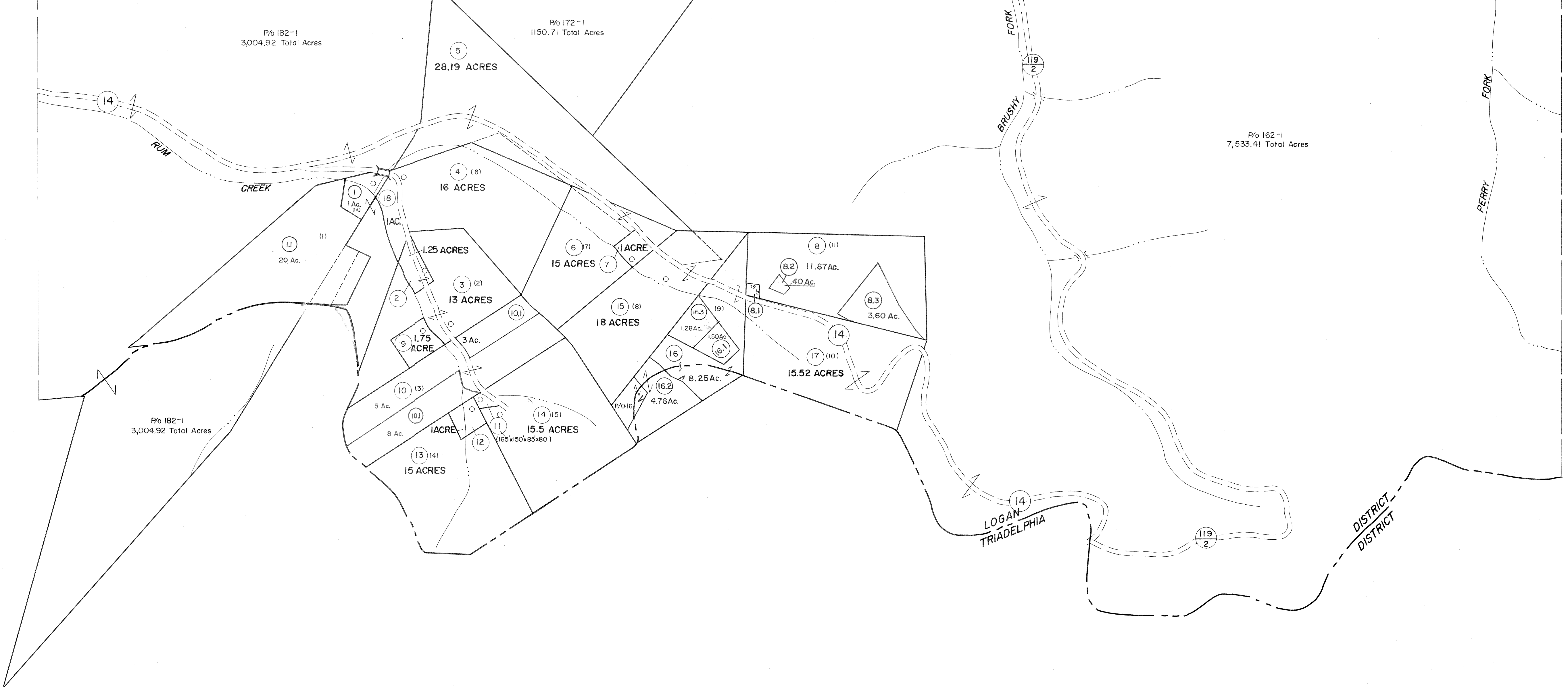


171 172
182 183

172 173
183 184



182 183

183 184

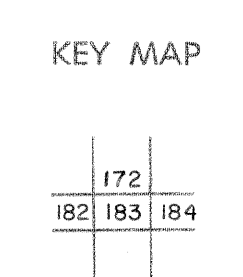
8.3 100' x 80' x 296' x 228.29' x 299.69' x 268.29' x 81'

8.2 143.01' x 158.45' x 126.64' x 100.99'

For Tax Purposes Only
 Prepared by
MICHAEL BAKER, JR., INC.
 Consulting Engineers
 Rochester, Pennsylvania

Legend	
Property line	—
Edge of pavement or roadway	—
Corporation line	—
District line	—
County line	—
Original lot line	—
Dead lot number	(15)
Parcel or index number	(10)
Improvement	o
Railroad	—

Revisions	
1	4-1-64
2	2-2-78 BAH
3	TO JULY 1981 C.P.
4	To 7-1-86 C.P.
5	REV TO 7-1-88 NCS
6	OGIS 4/30/92 DSH
7	7-1-2000 J.E.B.
8	6-2-2003 JEB



LOGAN COUNTY
 STATE OF WEST VIRGINIA
 Office of Assessor

DISTRICT **LOGAN**
 SHEET NO: 183
 Date, Aerial Photography: November, 1962 Date, Map: April, 1963
 Photo No: Scale: 1" = 400'